

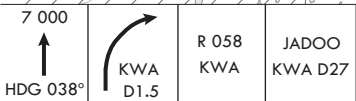
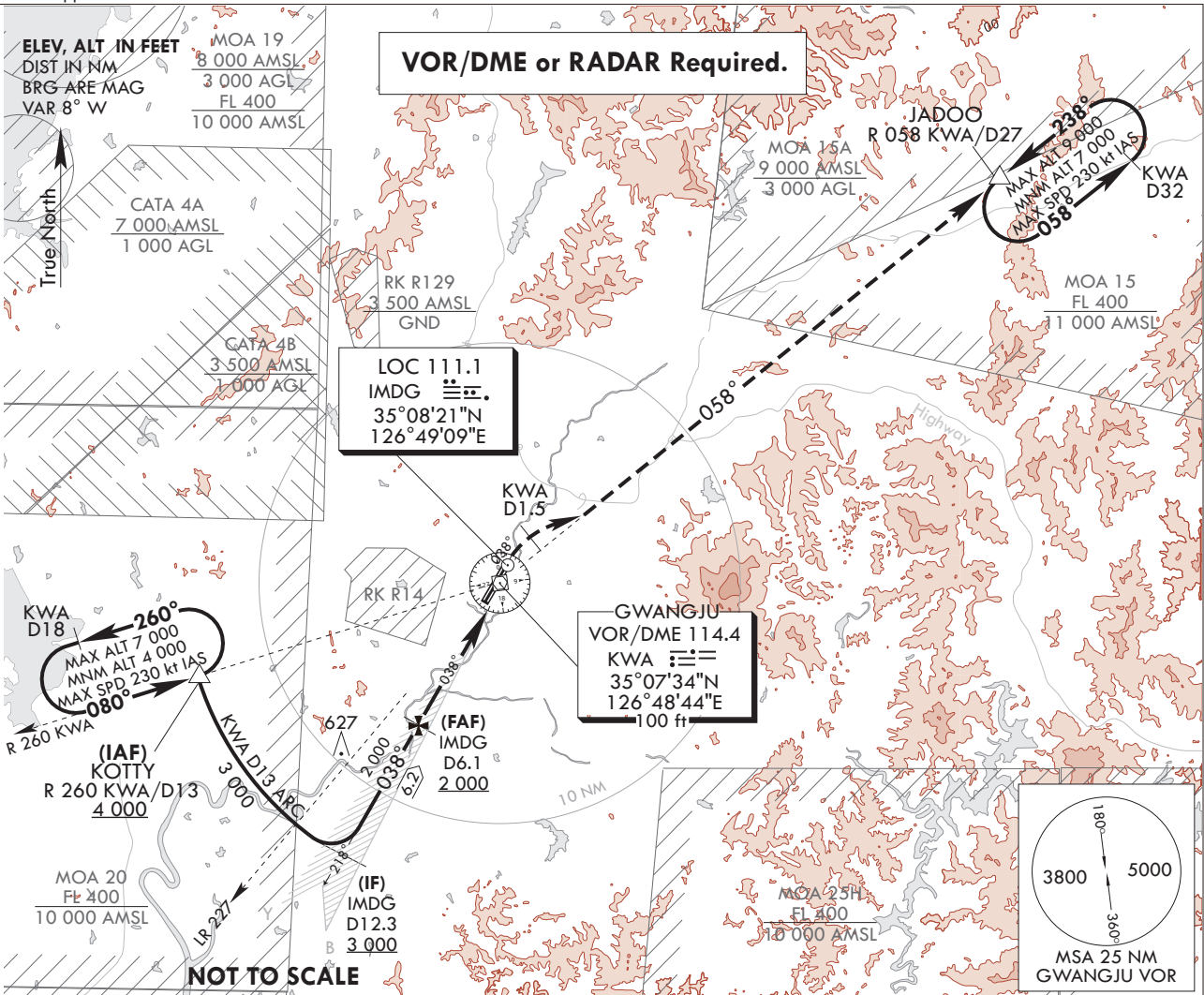
**INSTRUMENT
APPROACH
CHART**

AERODROME ELEV 48 ft
HEIGHTS RELATE TO
THR RWY 04R - ELEV 43 ft
HIGHEST ELEV TDZ 46 ft

GWANGJU APP	130.0
	228.9
GWANGJU TWR	118.05
	254.6

**GWANGJU/Gwangju(RKJJ)
ILS/DME RWY 04R**

Note : Approach and circle to land under U.S. TERPS.

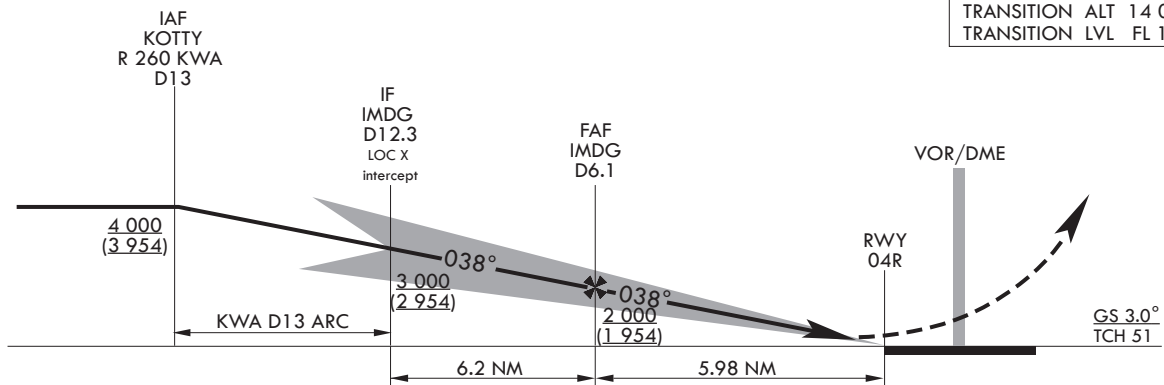


MISSED APPROACH

Climb to 7 000 ft on HDG 038° to KWA D1.5, and climbing right turn to intercept R 058 KWA and track on R 058 KWA to JADOO and hold, continue climb-in-hold to 7 000 ft.

TRANSITION ALT 14 000
TRANSITION LVL FL 140

Use IMDG DME when on the LOC course.



CATEGORY	A	B	C	D
S-ILS 04R		246/24	200(200-1/2)	
S-ILS 04R (ALS INOP)		246/40	200(200-3/4)	

* Circling not authorized.

Change : Page control.

INTENTIONALLY

LEFT

BLANK

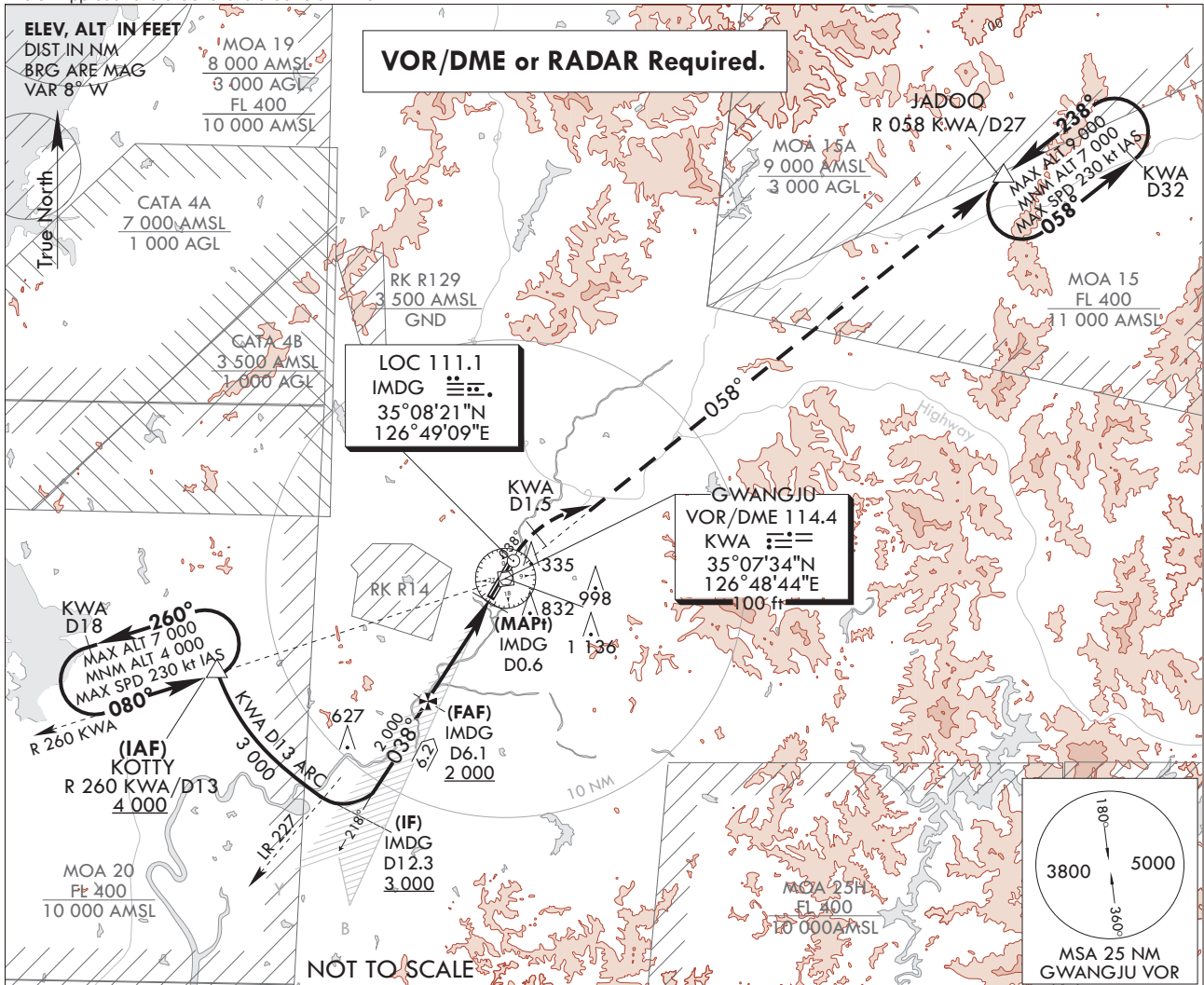
INSTRUMENT APPROACH CHART

AERODROME ELEV 48 ft
HEIGHTS RELATE TO
THR RWY 04R - ELEV 43 ft
HIGHEST ELEV TDZ 46 ft

GWANGJU APP 130.0
228.9
GWANGJU TWR 118.05
254.6

**GWANGJU/Gwangju(RKJJ)
LOC/DME RWY 04R**

Note : Approach and circle to land under U.S. TERPS.

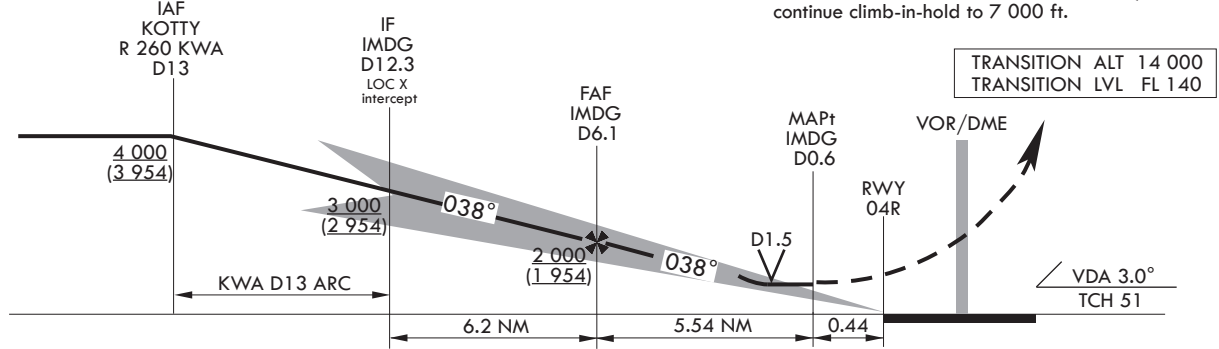


7 000
↑
HDG 038°

R 058 KWA JADOO KWA D27

Use IMDG DME when on the LOC course.

MISSED APPROACH
Climb to 7 000 ft on HDG 038° to KWA D1.5, and climbing right turn to intercept R 058 KWA and track on R 058 KWA to JADOO and hold, continue climb-in-hold to 7 000 ft.



CATEGORY	A	B	C	D
S-LOC 04R	520/40 474(500-3/4)			520/50 474(500-1)
S-LOC 04R (ALS INOP)	520/55 474(500-1)			520-1 3/8 474(500-1 3/8)
C CIRCLING*	720-1 672(700-1)	1 140-1 1/2 1 092(1 100-1 1/2)	1 140-3 1 092(1 100-3)	1 380-3 1 332(1 400-3)

* Circling not authorized for west of RWY 04-22.

Change : Page control.

INTENTIONALLY

LEFT

BLANK

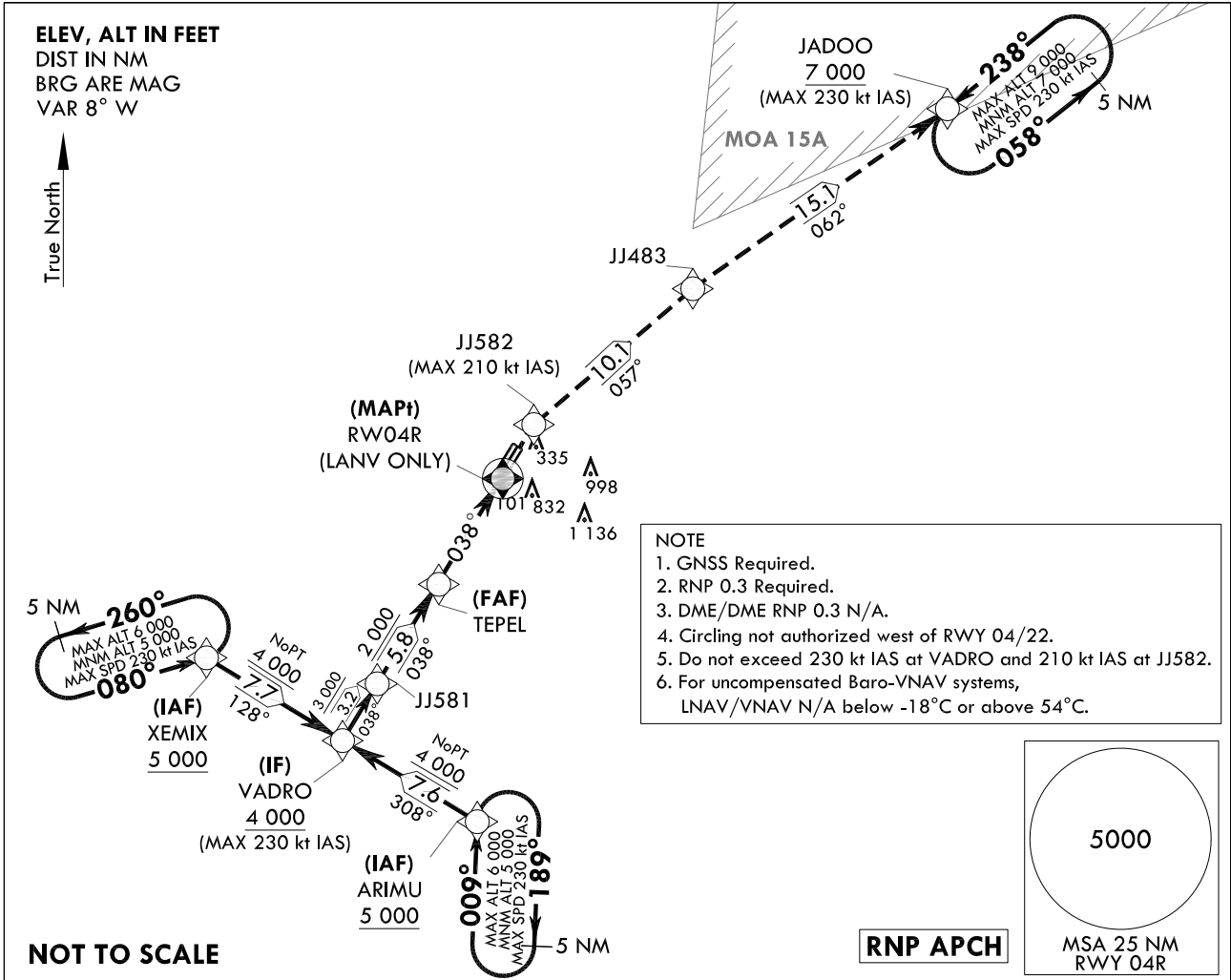
**INSTRUMENT
APPROACH
CHART**

AERODROME ELEV 48 ft
HEIGHTS RELATED TO
THR RWY 04R - ELEV 43 ft
HIGHEST ELEV TDZ 46 ft

GWANGJU APP 130.0
228.9
GWANGJU TWR 118.05
254.6

GWANGJU/Gwangju(RKJJ)
RNP RWY 04R

Note : Approach and circle to land under U.S. TERPS.

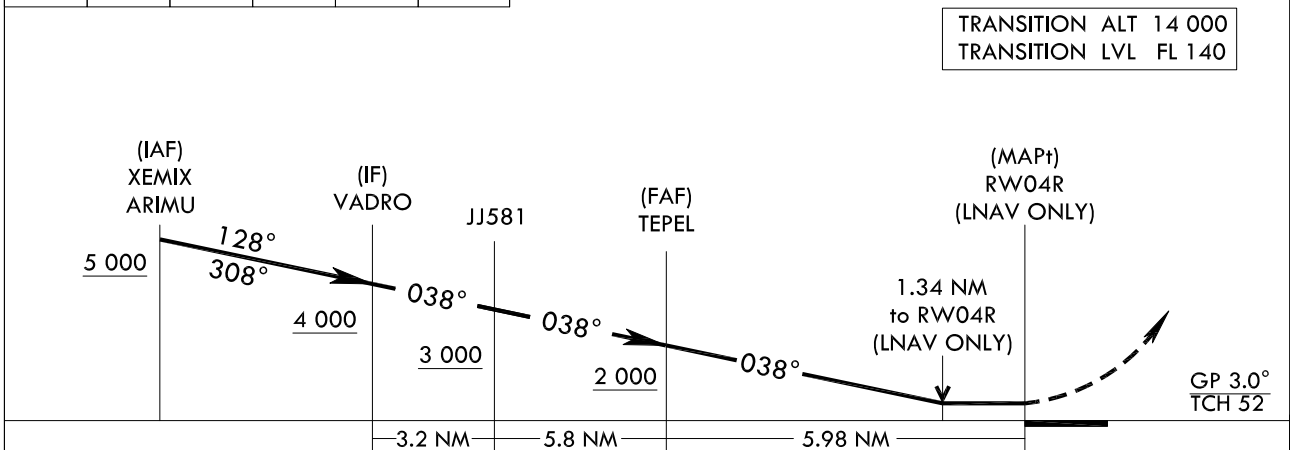


7 000	JJ582	TR	JJ483	TR	JADOO
↑	⬠	057°	⬠	062°	7 000

MISSED APPROACH

Climb to 7 000 ft on direct to JJ582 and track 057° to JJ483 and track 062° to JADOO and hold, continue climb-in-hold to 7 000 ft.

TRANSITION ALT 14 000
TRANSITION LVL FL 140



CATEGORY		A	B	C	D
LNAV/VNAV DA	ALS		319/24	273(300-1/2)	
	ALS INOP		319/45	273(300-7/8)	
LNAV MDA	ALS		520/55	474(500-1)	
	ALS INOP		520-1 3/8	474(500-1 3/8)	
CIRCLING		720-1 3/8 672(700-1 3/8)	1 140-1 1/2 1 092(1 100-1 1/2)	1 140-3 1 092(1 100-3)	1 380-3 1 332(1 400-3)

Change : Information of fix names(XEROX → XEMIX, DAEIN → VADRO, NOVEM → ARIMU, NOBEL → TEPEL).

AERONAUTICAL DATA TABULATION

Instrument Approach Procedure Coding Tables

RNP RWY 04R - via XEMIX to VADRO(IF)

Serial Number	Path Descriptor	Waypoint Identifier	Fly-over	Course/Track over	Distance (NM)	Turn direction	Altitude (ft)	Speed (kt)	Coordinates	VPA/TCH	Navigation specification	Remarks
001	IF	XEMIX	-	-	-	-	+5 000	-230	34°57'41.4"N 126°30'53.8"E	-	RNP APCH	IAF
002	TF	VADRO	-	128 (119.8)	7.7	-	+4 000	-230	34°53'51.4"N 126°39'01.7"E	-	RNP APCH	IF NoPT

RNP RWY 04R - via ARIMU to VADRO(IF)

Serial Number	Path Descriptor	Waypoint Identifier	Fly-over	Course/Track over	Distance (NM)	Turn direction	Altitude (ft)	Speed (kt)	Coordinates	VPA/TCH	Navigation specification	Remarks
001	IF	ARIMU	-	-	-	-	+5 000	-230	34°50'04.0"N 126°47'02.3"E	-	RNP APCH	IAF
002	TF	VADRO	-	308 (299.9)	7.6	-	+4 000	-230	34°53'51.4"N 126°39'01.7"E	-	RNP APCH	IF NoPT

RNP RWY 04R - via VADRO(IF) to MAHF

Serial Number	Path Descriptor	Waypoint Identifier	Fly-over	Course/Track over	Distance (NM)	Turn direction	Altitude (ft)	Speed (kt)	Coordinates	VPA/TCH	Navigation specification	Remarks
001	TF	VADRO	-	-	-	-	+4 000	-230	34°53'51.4"N 126°39'01.7"E	-	RNP APCH	IF
002	TF	JJ581	-	038 (029.8)	3.2	-	+3 000	-	34°56'38.2"N 126°40'57.9"E	-	RNP APCH	-
003	TF	TEPEL	-	038 (029.9)	5.8	-	+2 000	-	35°01'41.5"N 126°44'29.5"E	-3.0/52	RNP APCH	FAF
004	TF	RW04R	Y	038 (029.9)	6.0	-	-	-	35°06'53.1"N 126°48'07.4"E	-	RNP APCH	MAPT LNAV ONLY
005	DF	JJ582	-	-	-	-	-	-210	35°09'21.0"N 126°49'51.1"E	-	RNP APCH	-
006	TF	JJ483	-	057 (048.2)	10.1	-	-	-	35°16'05.6"N 126°59'03.3"E	-	RNP APCH	-
007	TF	JADOO	-	062 (053.6)	15.1	-	+7 000	-230	35°25'02.6"N 127°13'54.1"E	-	RNP APCH	-

HOLDING PROCEDURE

Holding Identification	Path Descriptor	Waypoint Identifier	Fly-over	Course/Track over	Distance (NM)	Turn direction	Altitude (ft)	Speed (kt)	Coordinates	VPA/TCH	Navigation specification	Remarks
RNP RWY 04R	HM	ARIMU	-	009 (000.6)	5.0	R	-6 000 +5 000	-230	34°50'04.0"N 126°47'02.3"E	-	RNAV 1	-
	HM	XEMIX	-	080 (071.6)	5.0	L	-6 000 +5 000	-230	34°57'41.4"N 126°30'53.8"E	-	RNAV 1	-
	HM	JADOO	-	238 (229.6)	5.0	L	-9 000 +7 000	-230	35°25'02.6"N 127°13'54.1"E	-	RNAV 1	-

Change : Information of fix names(XEROX → XEMIX, DAEIN → VADRO, NOVEM → ARIMU, NOBEL → TEPEL).

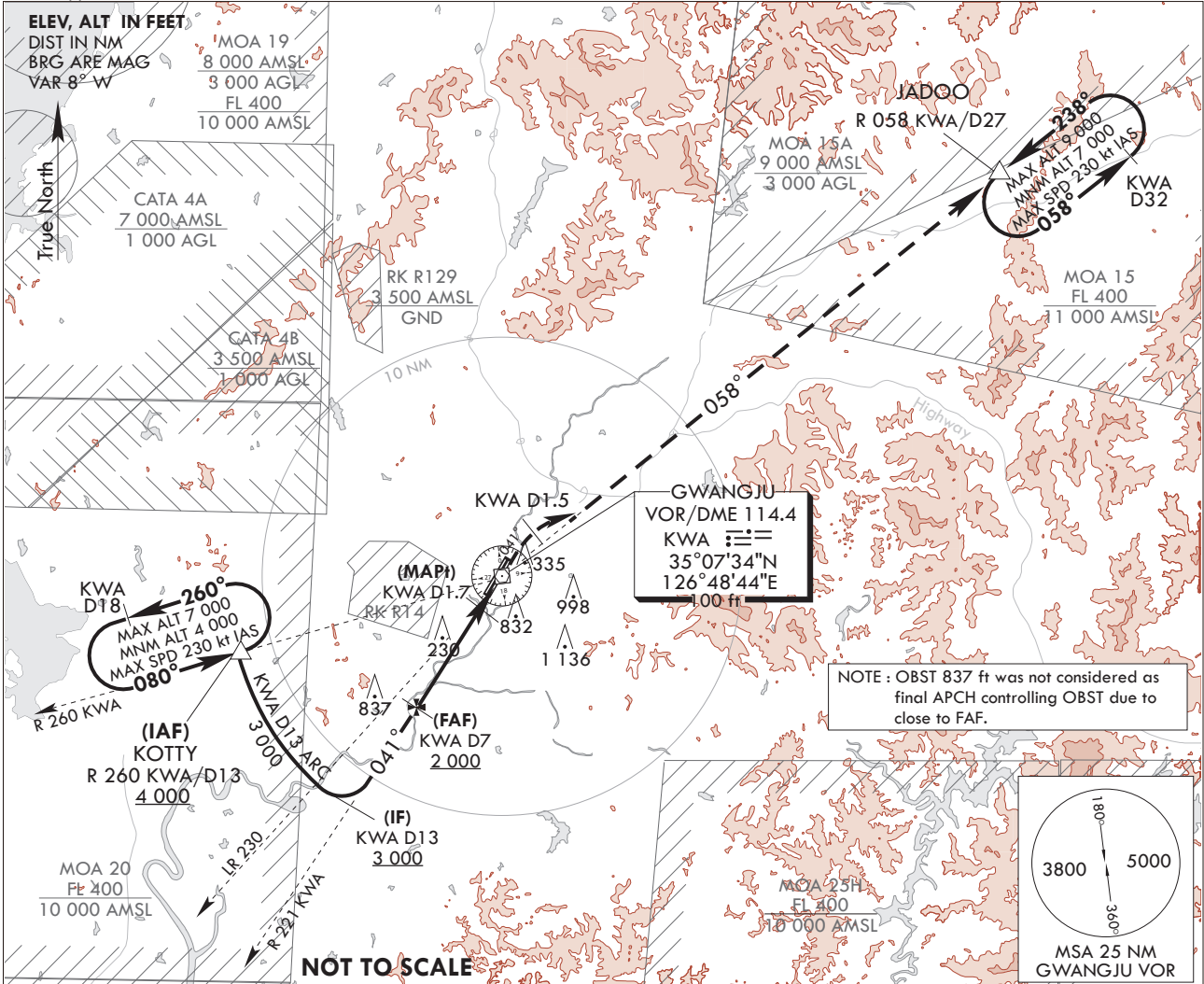
**INSTRUMENT
APPROACH
CHART**

AERODROME ELEV 48 ft
HEIGHTS RELATE TO
THR RWY 04R - ELEV 43 ft
HIGHEST ELEV TDZ 46 ft

GWANGJU APP	130.0
	228.9
GWANGJU TWR	118.05
	254.6

**GWANGJU/Gwangju(RKJJ)
VOR/DME RWY 04R**

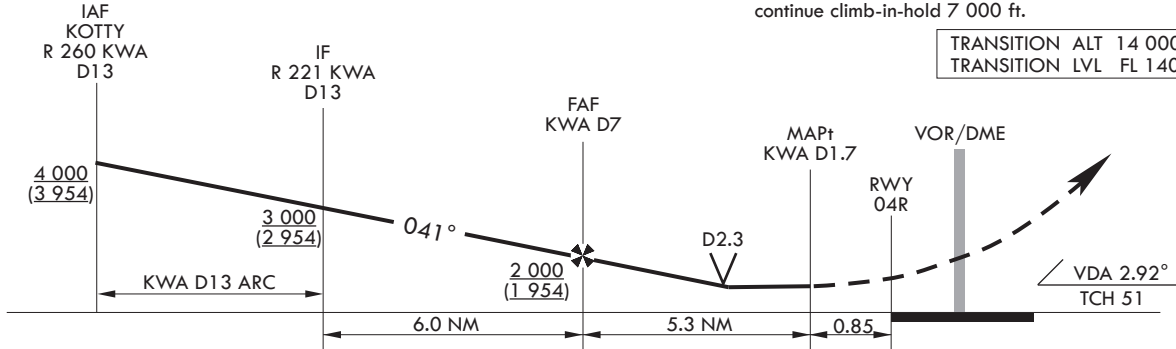
Note : Approach and circle to land under U.S. TERPS.



MISSED APPROACH

Climb to 7 000 ft on HDG 041° to KWA D1.5, and climbing right turn to intercept R 058 KWA and track on R 058 KWA to JADOO and hold, continue climb-in-hold 7 000 ft.

TRANSITION ALT 14 000
TRANSITION LVL FL 140



CATEGORY	A	B	C	D
S-VOR 04R		560/40 514(600-3/4)		560/55 514(600-1)
S-VOR 04R (ALS INOP)		560/55 514(600-1)		560-1 3/8 514(600-1 3/8)
CIRCLING*	720-1 672(700-1)	1 140-1 1/2 1 092(1 100-1 1/2)	1 140-3 1 092(1 100-3)	1 380-3 1 332(1 400-3)

* Circling not authorized for west of RWY 04-22.

Change : Page control.

INTENTIONALLY

LEFT

BLANK

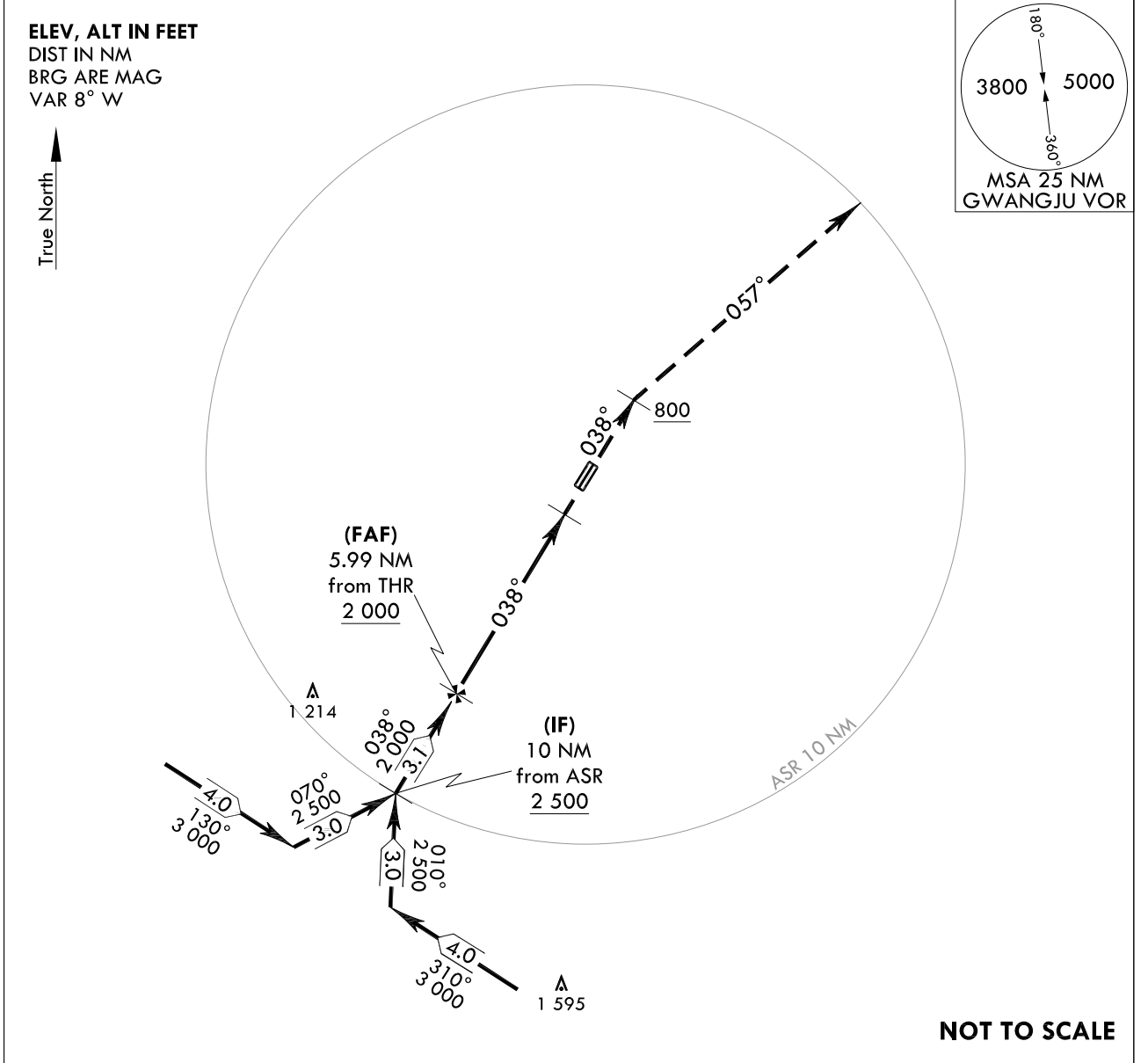
**INSTRUMENT
APPROACH
CHART**

AERODROME ELEV 48 ft
HEIGHTS RELATED TO
THR RWY 04R - ELEV 43 ft
HIGHEST ELEV TDZ 46 ft

GWANGJU APP	130.0
	228.9
GWANGJU TWR	118.05
	254.6

GWANGJU/Gwangju(RKJJ)
PAR RWY 04R

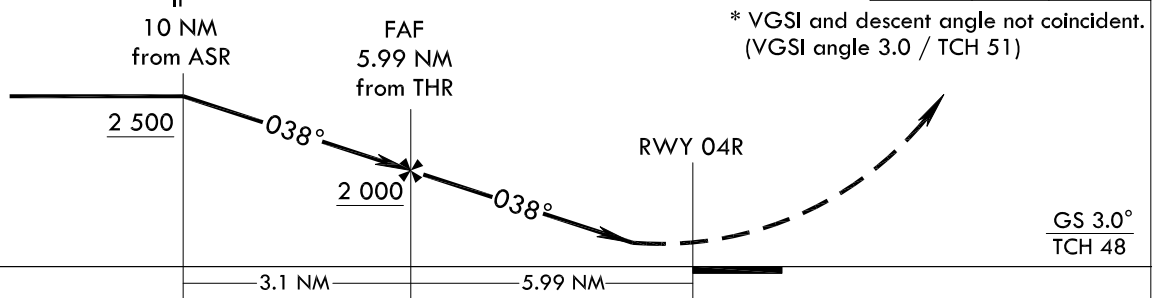
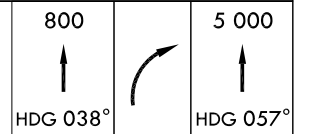
Note : Approach and circle to land under U.S. TERPS.



MISSED APPROACH

Climb HDG 038° to 800 ft, then climbing right turn HDG 057° maintain 5 000 ft and assigned HDG for radar vector.

TRANSITION ALT	14 000
TRANSITION LVL	FL 140



CATEGORY	A	B	C	D	E
S-PAR 04R		246/24	200(200-1/2)		
S-PAR 04R (ALS INOP)		246/40	200(200-3/4)		

* Circling not authorized.

Change : Page control.

INTENTIONALLY

LEFT

BLANK

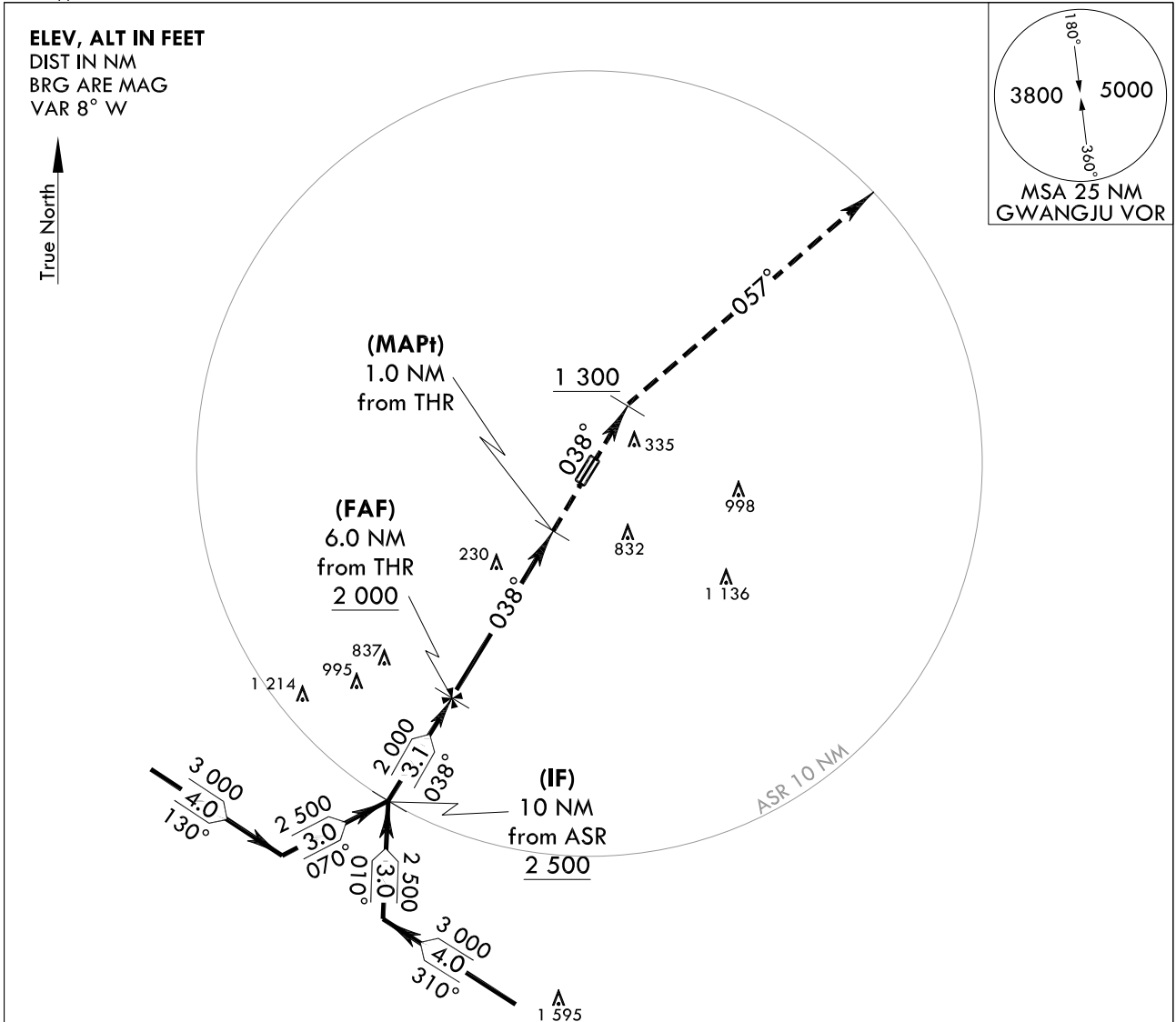
**INSTRUMENT
APPROACH
CHART**

AERODROME ELEV 48 ft
HEIGHTS RELATED TO
THR RWY 04R - ELEV 43 ft
HIGHEST ELEV TDZ 46 ft

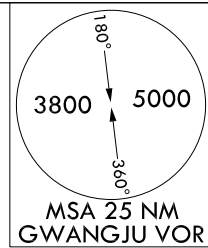
GWANGJU APP 130.0
228.9
GWANGJU TWR 118.05
254.6

**GWANGJU/Gwangju(RKJJ)
ASR RWY 04R**

Note : Approach and circle to land under U.S. TERPS.



ELEV, ALT IN FEET
DIST IN NM
BRG ARE MAG
VAR 8° W



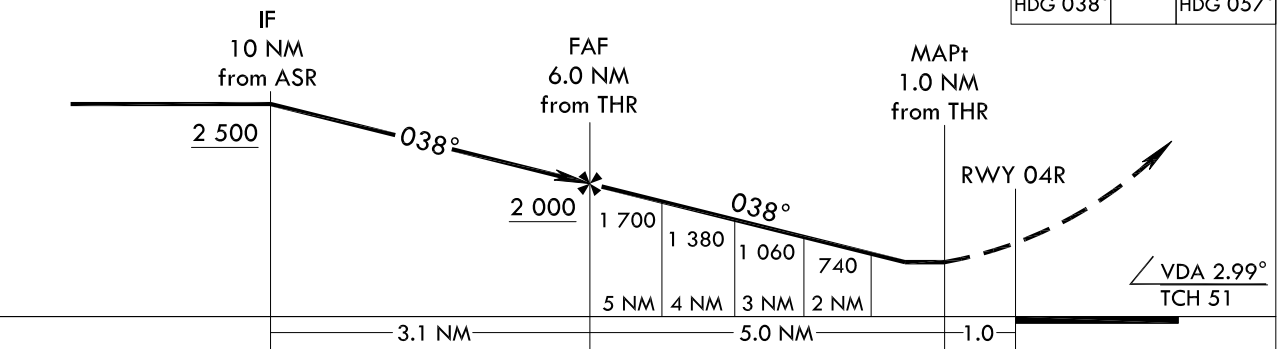
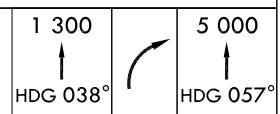
NOTE :
OBST 837 ft was not considered as final APCH controlling OBST due to close to FAF.

NOT TO SCALE

MISSED APPROACH

Climb HDG 038° to 1 300 ft, then climbing right turn HDG 057° maintain 5 000 ft and assigned HDG for radar vector.

TRANSITION ALT 14 000
TRANSITION LVL FL 140



CATEGORY	A		B		C		D		E
S-ASR 04R	560/40	514(600-3/4)					560/55	514(600-1)	
S-ASR 04R (ALS INOP)	560/60	514(600-1 1/4)					560-1 3/8	514(600-1 3/8)	
C CIRCLING*	720-1 1/4 672(700-1 1/4)	1 140-1 1/2 1 092(1 100-1 1/2)			1 140-3 1 092(1 100-3)		1 380-3 1 332(1 400-3)		1 460-3 1 412(1 500-3)

* Circling not authorized for west of RWY 04-22.

Change : Page control.

INTENTIONALLY

LEFT

BLANK

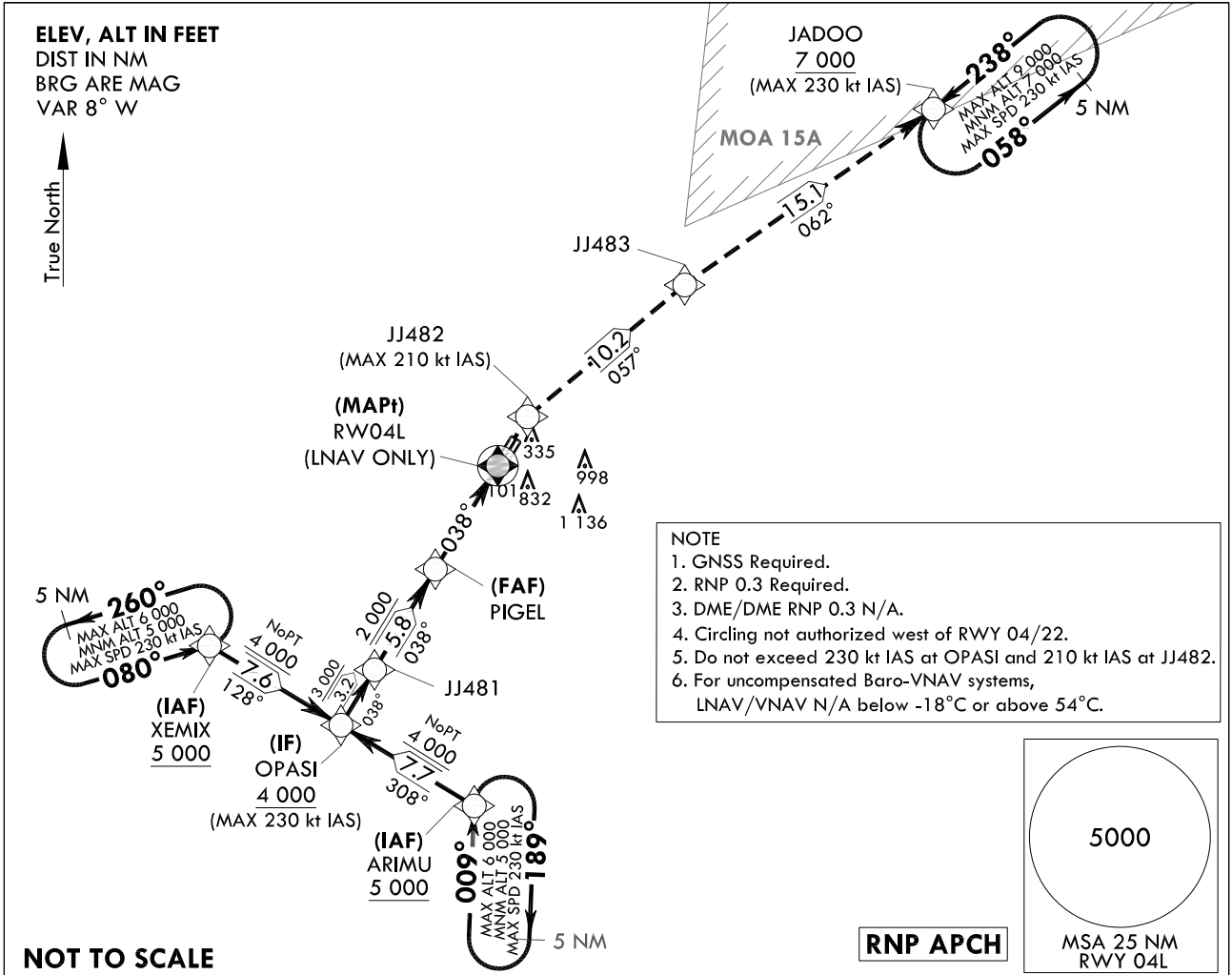
INSTRUMENT APPROACH CHART

AERODROME ELEV 48 ft
HEIGHTS RELATED TO
THR RWY 04L - ELEV 44 ft
HIGHEST ELEV TDZ 46 ft

GWANGJU APP	130.0
	228.9
GWANGJU TWR	118.05
	254.6

GWANGJU/Gwangju(RKJJ)
RNP RWY 04L

Note : Approach and circle to land under U.S. TERPS.



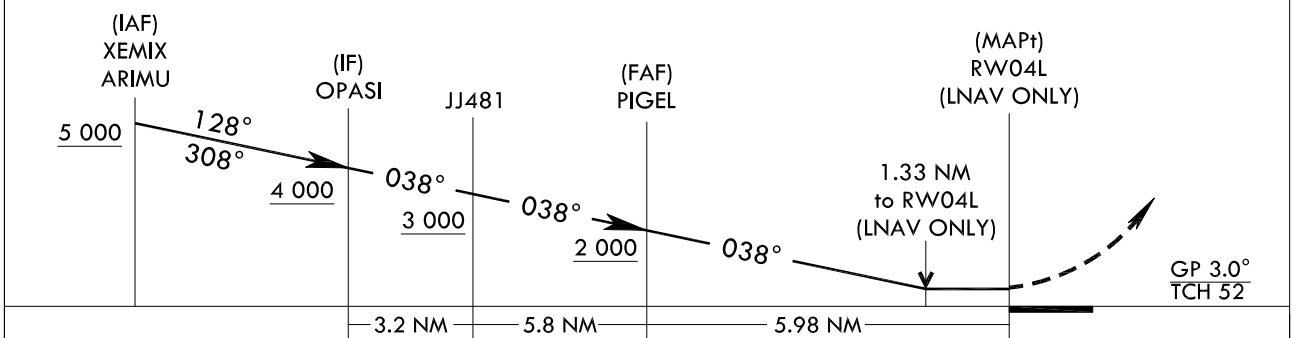
NOT TO SCALE

7 000	JJ482	TR	JJ483	TR	JADOO
↑	◇	057°	◇	062°	◇
					7 000

MISSED APPROACH

Climb to 7 000 ft on direct to JJ482 and track 057° to JJ483 and track 062° to JADOO and hold, continue climb-in-hold to 7 000 ft.

TRANSITION ALT 14 000
TRANSITION LVL FL 140



CATEGORY		A	B	C	D
LNAV/VNAV DA	ALS		319/24	273(300-1/2)	
	ALS INOP		319/45	273(300-7/8)	
LNAV MDA	ALS		520/50	474(500-1)	
	ALS INOP		520-1 3/8	474(500-1 3/8)	
CIRCLING		720-1 3/8 672(700-1 3/8)	1 140-1 1/2 1 092(1 100-1 1/2)	1 140-3 1 092(1 100-3)	1 380-3 1 332(1 400-3)

Change : Information of fix names(XEROX → XEMIX, BUDLE → OPASI, NOVEM → ARIMU, TIGER → PIGEL).

AERONAUTICAL DATA TABULATION

Instrument Approach Procedure Coding Tables

RNP RWY 04L - via XEMIX to OPASI(IF)

Serial Number	Path Descriptor	Waypoint Identifier	Fly-over	Course/Track (M/T)	Distance (NM)	Turn direction	Altitude (ft)	Speed (kt)	Coordinates	VPA/TCH	Navigation specification	Remarks
001	IF	XEMIX	-	-	-	-	+5 000	-230	34°57'41.4"N 126°30'53.8"E	-	RNP APCH	IAF
002	TF	OPASI	-	128 (119.8)	7.6	-	+4 000	-230	34°53'54.5"N 126°38'55.1"E	-	RNP APCH	IF NoPT

RNP RWY 04L - via ARIMU to OPASI(IF)

Serial Number	Path Descriptor	Waypoint Identifier	Fly-over	Course/Track (M/T)	Distance (NM)	Turn direction	Altitude (ft)	Speed (kt)	Coordinates	VPA/TCH	Navigation specification	Remarks
001	IF	ARIMU	-	-	-	-	+5 000	-230	34°50'04.0"N 126°47'02.3"E	-	RNP APCH	IAF
002	TF	OPASI	-	308 (299.9)	7.7	-	+4 000	-230	34°53'54.5"N 126°38'55.1"E	-	RNP APCH	IF NoPT

RNP RWY 04L - via OPASI(IF) to MAHF

Serial Number	Path Descriptor	Waypoint Identifier	Fly-over	Course/Track (M/T)	Distance (NM)	Turn direction	Altitude (ft)	Speed (kt)	Coordinates	VPA/TCH	Navigation specification	Remarks
001	TF	OPASI	-	-	-	-	+4 000	-230	34°53'54.5"N 126°38'55.1"E	-	RNP APCH	IF
002	TF	JJ481	-	038 (029.8)	3.2	-	+3 000	-	34°56'41.3"N 126°40'51.3"E	-	RNP APCH	-
003	TF	PIGEL	-	038 (029.9)	5.8	-	+2 000	-	35°01'44.8"N 126°44'23.0"E	-3.0/52	RNP APCH	FAF
004	TF	RW04L	Y	038 (029.9)	6.0	-	-	-	35°06'56.2"N 126°48'00.8"E	-	RNP APCH	MAPT LNAV ONLY
005	DF	JJ482	-	-	-	-	-	-210	35°09'23.8"N 126°49'44.2"E	-	RNP APCH	-
005	TF	JJ483	-	057 (048.7)	10.2	-	-	-	35°16'05.6"N 126°59'03.3"E	-	RNP APCH	-
006	TF	JADOO	-	062 (053.6)	15.1	-	+7 000	-230	35°25'02.6"N 127°13'54.1"E	-	RNP APCH	-

HOLDING PROCEDURE

Holding Identification	Path Descriptor	Waypoint Identifier	Fly-over	Course/Track (M/T)	Distance (NM)	Turn direction	Altitude (ft)	Speed (kt)	Coordinates	VPA/TCH	Navigation specification	Remarks
RNP RWY 04L	HM	ARIMU	-	009 (000.6)	5.0	R	-6 000 +5 000	-230	34°50'04.0"N 126°47'02.3"E	-	RNAV 1	-
	HM	XEMIX	-	080 (071.6)	5.0	L	-6 000 +5 000	-230	34°57'41.4"N 126°30'53.8"E	-	RNAV 1	-
	HM	JADOO	-	238 (229.6)	5.0	L	-9 000 +7 000	-230	35°25'02.6"N 127°13'54.1"E	-	RNAV 1	-

Change : Information of fix names(XEROX → XEMIX, BUDLE → OPASI, NOVEM → ARIMU, TIGER → PIGEL).

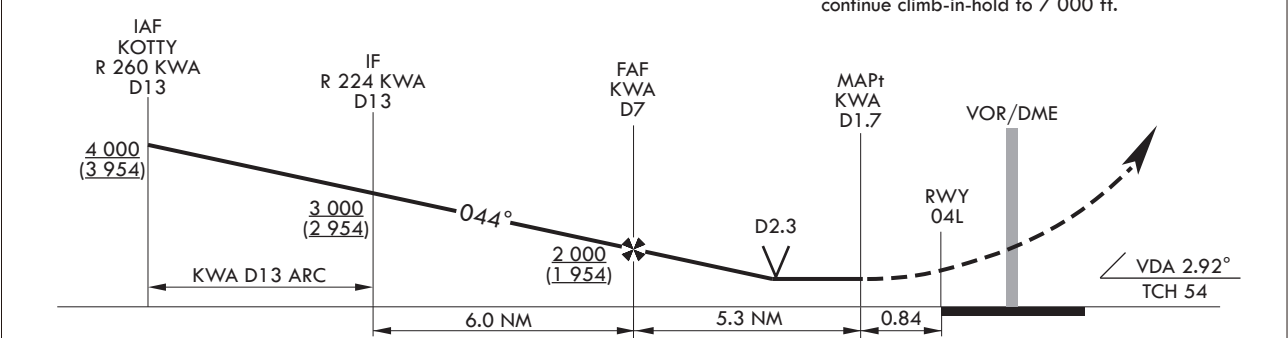
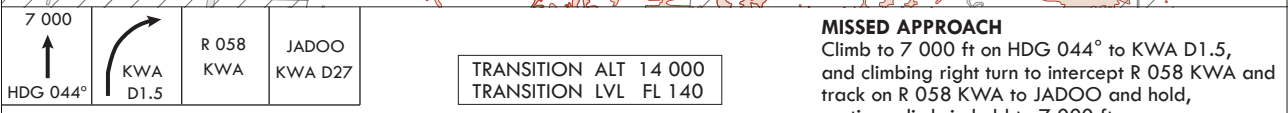
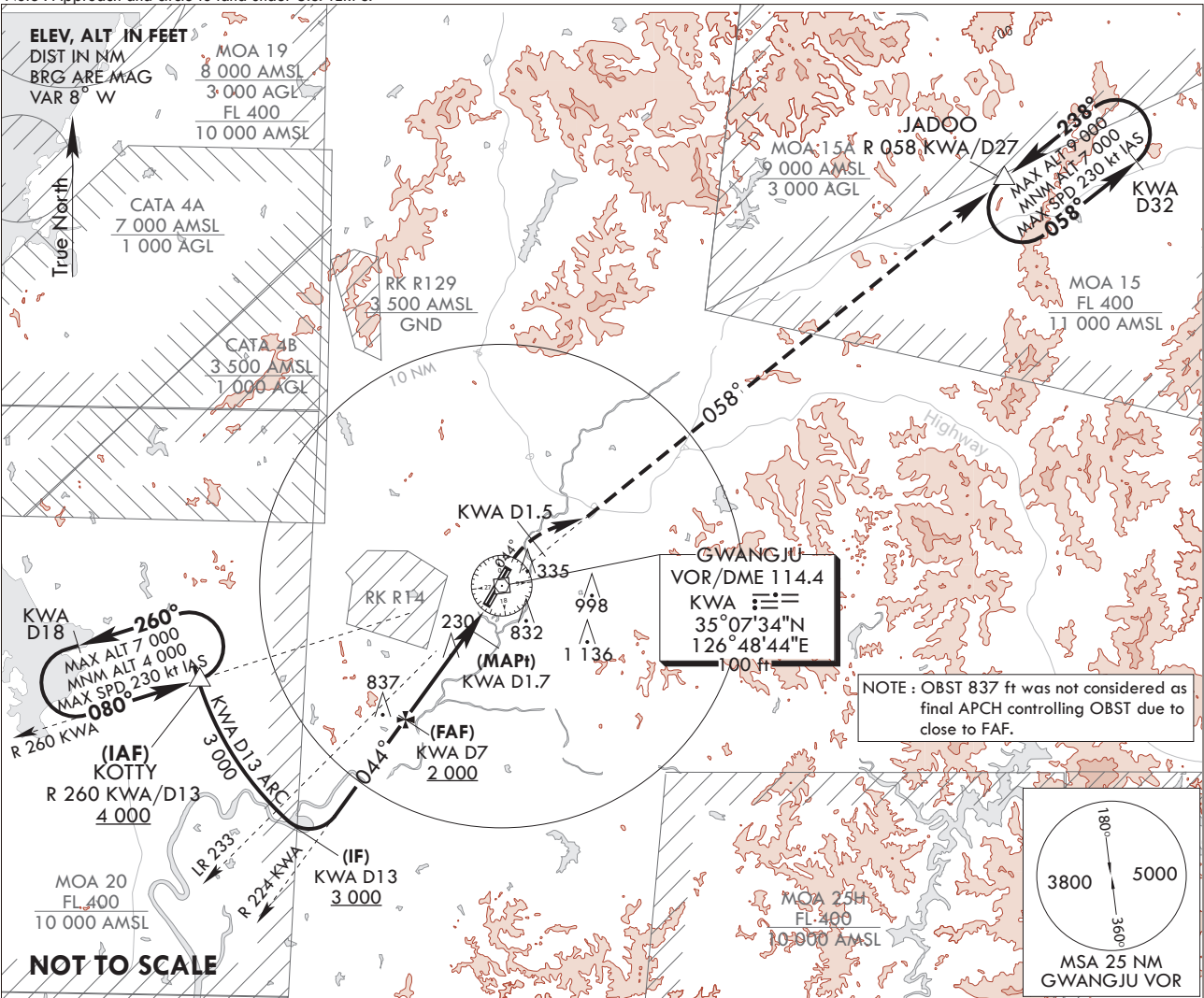
**INSTRUMENT
APPROACH
CHART**

AERODROME ELEV 48 ft
HEIGHTS RELATE TO
THR RWY 04L - ELEV **44 ft**
HIGHEST ELEV TDZ **46 ft**

GWANGJU APP	130.0
	228.9
GWANGJU TWR	118.05
	254.6

**GWANGJU/Gwangju(RKJJ)
VOR/DME RWY 04L**

Note : Approach and circle to land under U.S. TERPS.



CATEGORY	A	B	C	D
S-VOR 04L	560/40 514(600-3/4)			560/55 514(600-1)
S-VOR 04L (ALS INOP)	560/55 514(600-1)			560-1 3/8 514(600-1 3/8)
<input checked="" type="checkbox"/> CIRCLING*	720-1 672(700-1)	1 140-1 1/2 1 092(1 100-1 1/2)	1 140-3 1 092(1 100-3)	1 380-3 1 332(1 400-3)

*Circling not authorized for west of RWY 04-22.

Change : Page control.

INTENTIONALLY

LEFT

BLANK

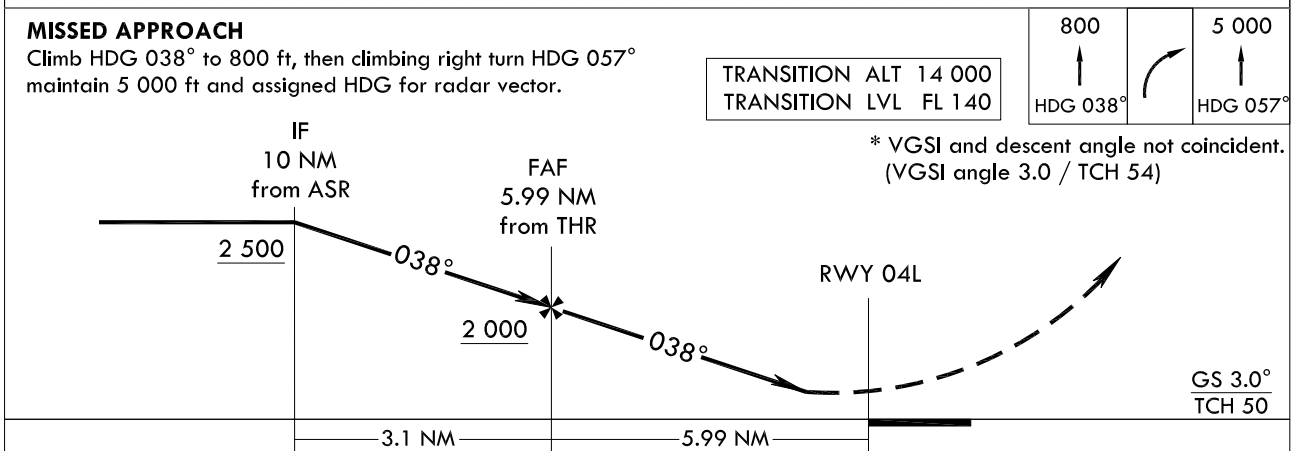
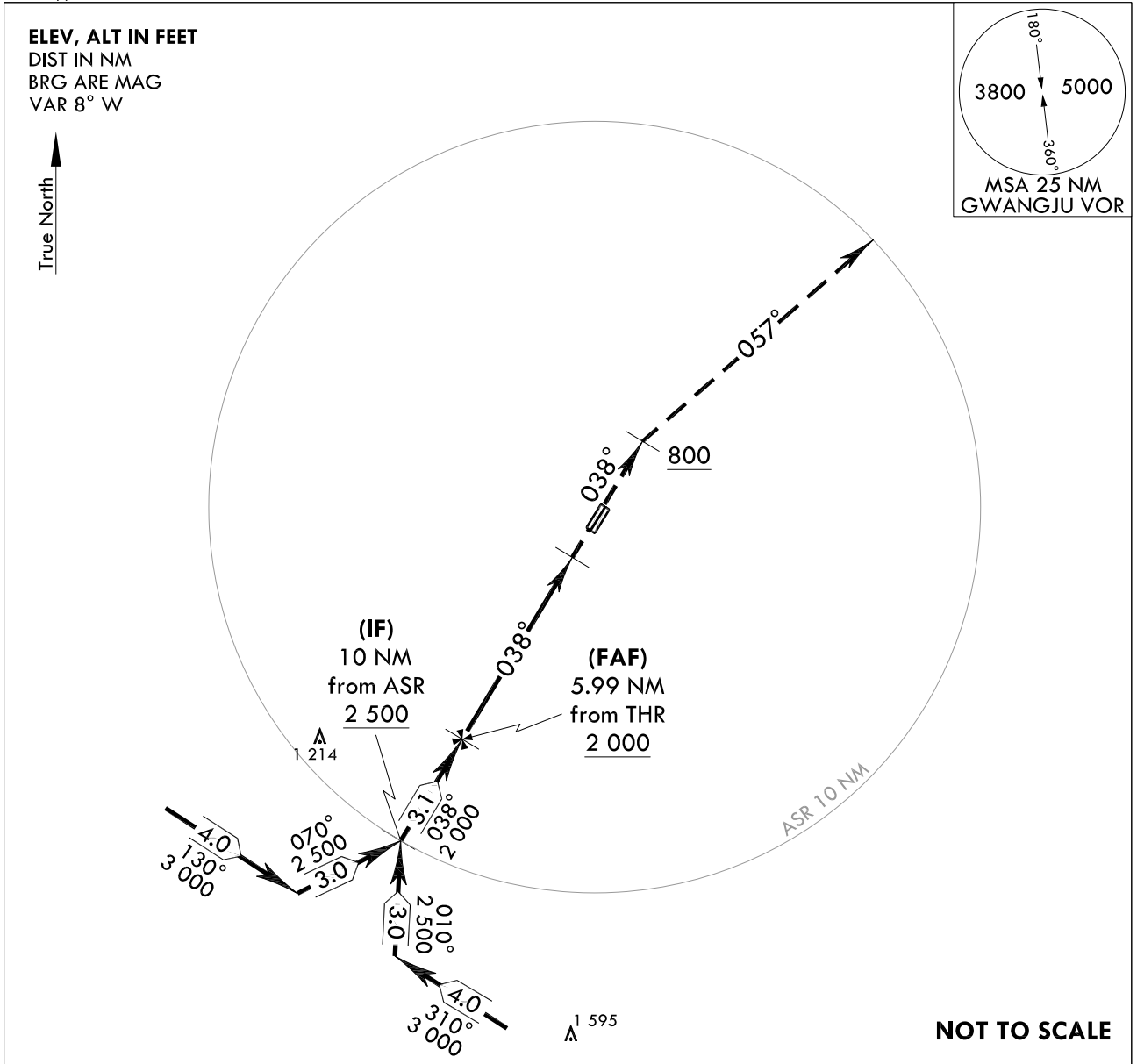
**INSTRUMENT
APPROACH
CHART**

AERODROME ELEV 48 ft
HEIGHTS RELATED TO
THR RWY 04L - ELEV **44 ft**
HIGHEST ELEV TDZ **46 ft**

GWANGJU APP	130.0
	228.9
GWANGJU TWR	118.05
	254.6

GWANGJU/Gwangju(RKJJ)
PAR RWY 04L

Note : Approach and circle to land under U.S. TERPS.



CATEGORY	A	B	C	D	E
S-PAR 04L		246/24	200(200-1/2)		
S-PAR 04L (ALS INOP)		246/40	200(200-3/4)		

* Circling not authorized.

Change : Page control.

INTENTIONALLY

LEFT

BLANK

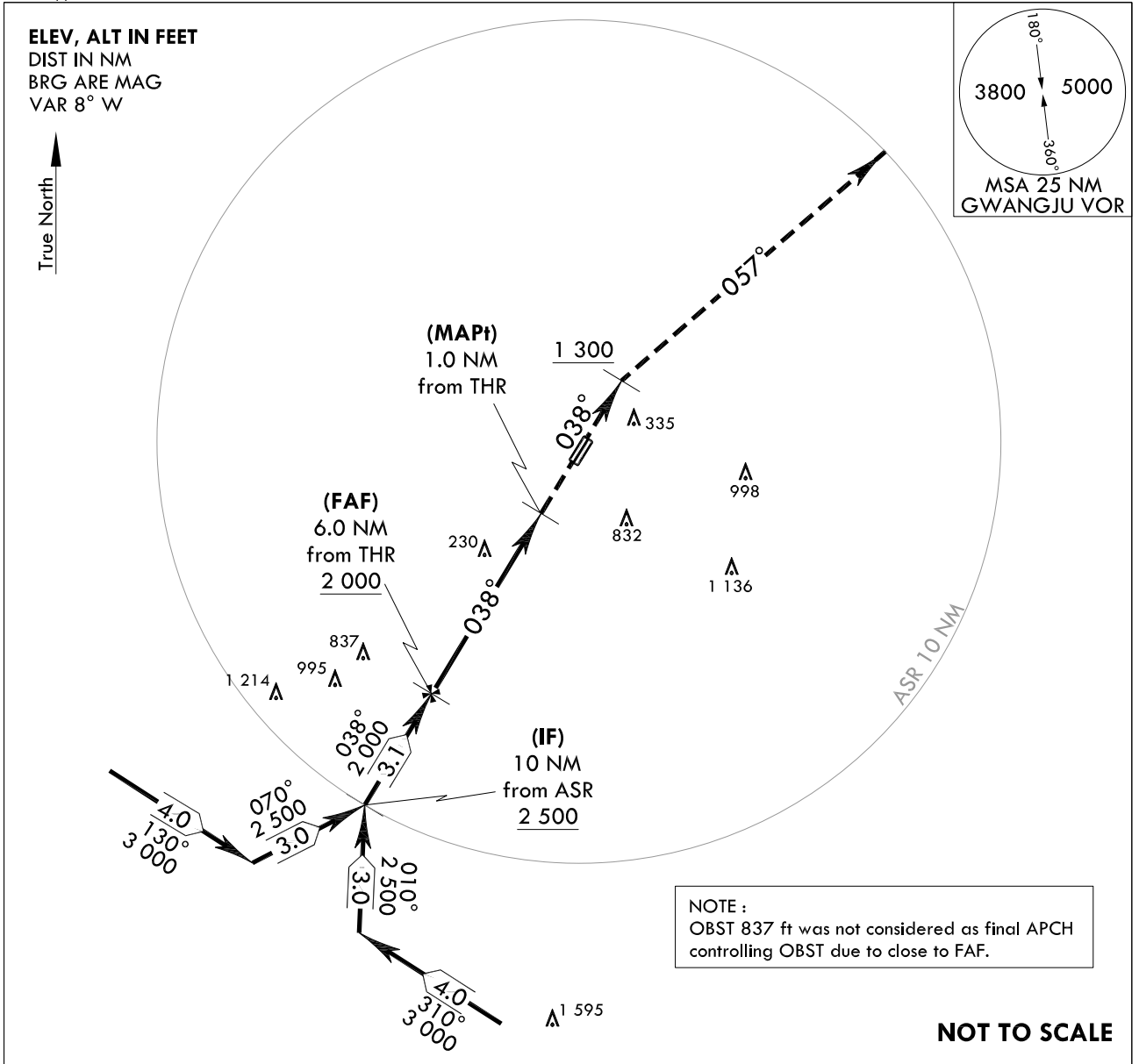
**INSTRUMENT
APPROACH
CHART**

AERODROME ELEV 48 ft
HEIGHTS RELATED TO
THR RWY 04L - ELEV 44 ft
HIGHEST ELEV TDZ 46 ft

GWANGJU APP 130.0
228.9
GWANGJU TWR 118.05
254.6

**GWANGJU/Gwangju(RKJJ)
ASR RWY 04L**

Note : Approach and circle to land under U.S. TERPS.

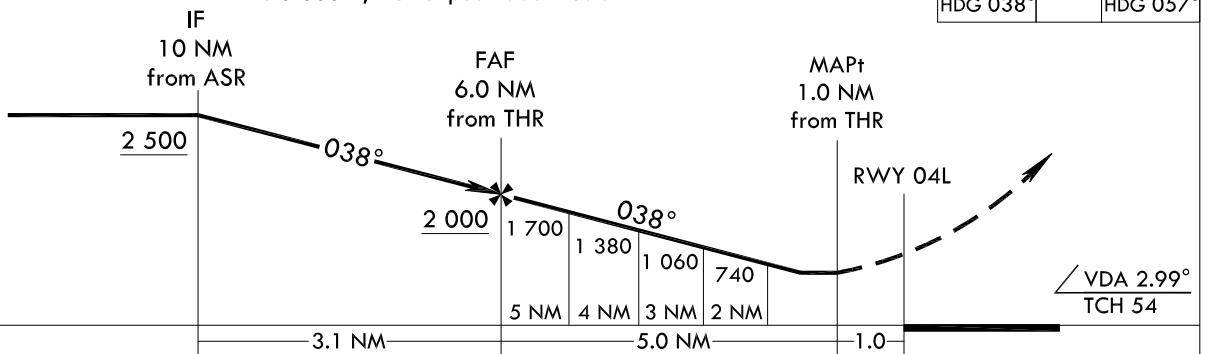
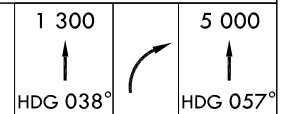


NOT TO SCALE

TRANSITION ALT 14 000
TRANSITION LVL FL 140

MISSED APPROACH

Climb to 1 300 ft on HDG 038°, then climbing right turn HDG 057° to 5 000 ft, then expect radar vector.



CATEGORY	A	B	C	D	E
S-ASR 04L	560/40 514(600-3/4)			560/55 514(600-1)	
S-ASR 04L (ALS INOP)	560/60 514(600-1 1/4)			560-1 3/8 514(600-1 3/8)	
CIRCLING*	720-1 1/4 672(700-1 1/4)	1 140-1 1/2 1 092(1 100-1 1/2)	1 140-3 1 092(1 100-3)	1 380-3 1 332(1 400-3)	1 460-3 1 412(1 500-3)

* Circling not authorized for west of RWY 04-22.

Change : Page control.

INTENTIONALLY

LEFT

BLANK

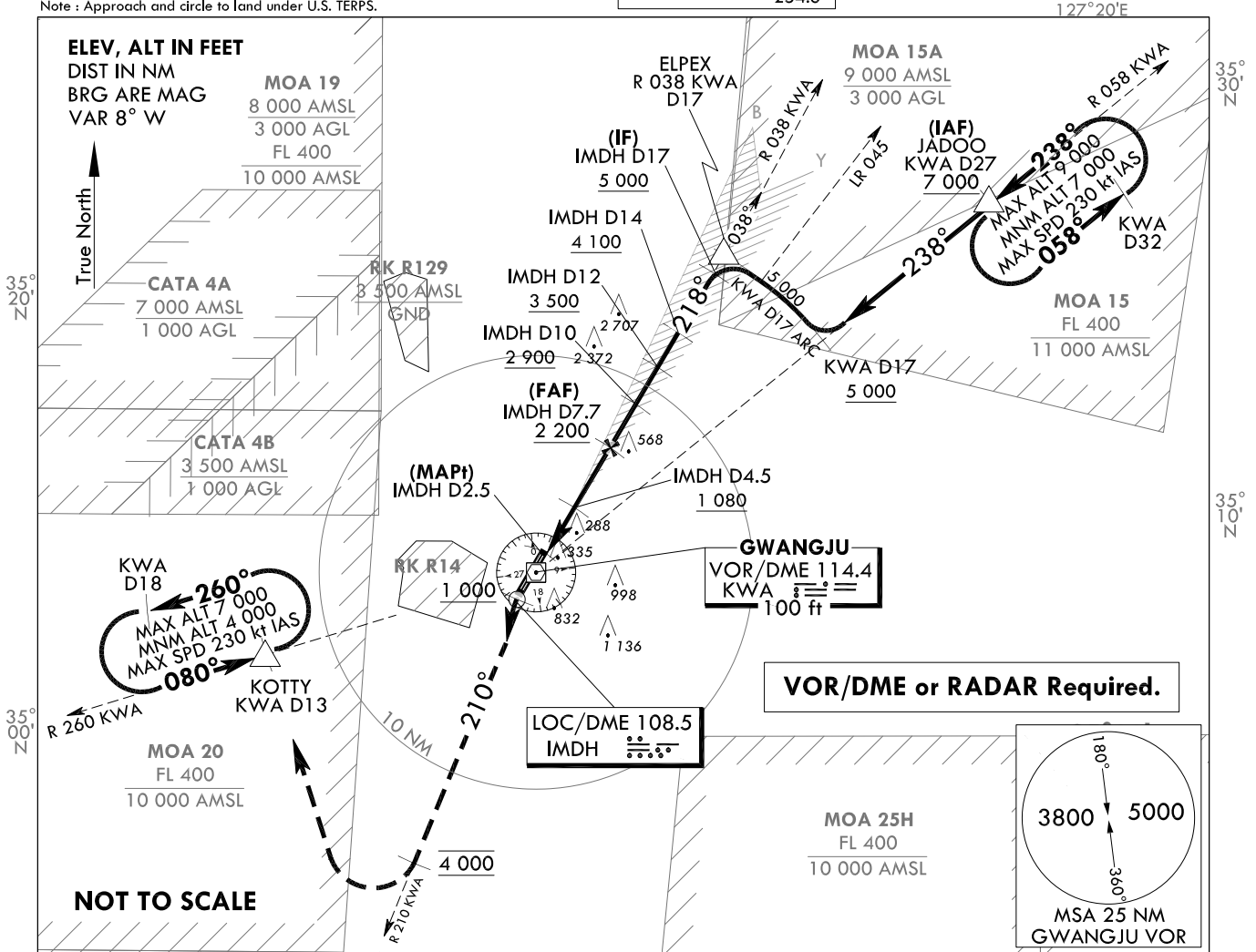
**INSTRUMENT
APPROACH
CHART**

AERODROME ELEV 48 ft
HEIGHTS RELATED TO
THR RWY 22L - ELEV 46 ft
HIGHEST ELEV TDZ 48 ft

GWANGJU APP	130.0
	228.9
GWANGJU TWR	118.05
	254.6

GWANGJU/Gwangju(RKJJ)
LOC/DME RWY 22L

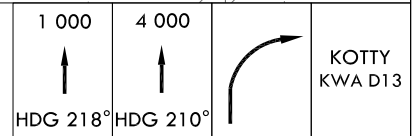
Note : Approach and circle to land under U.S. TERPS.



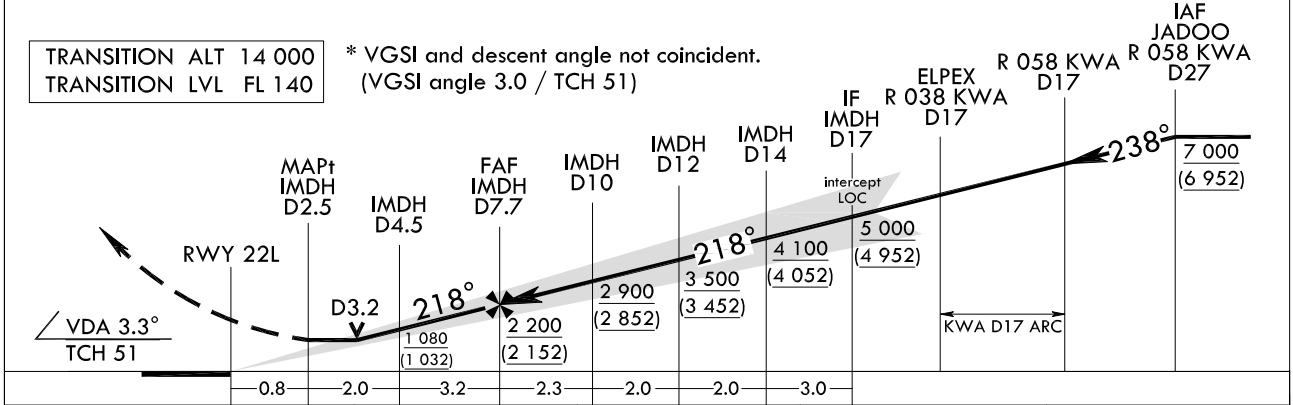
MISSED APPROACH

Climb to 1 000 ft on HDG 218°, then climbing left turn HDG 210° to 4 000 ft, then right turn direct to KOTTY and hold.

* Use IMDH DME when on the localizer course.



TRANSITION ALT 14 000
TRANSITION LVL FL 140
* VGSI and descent angle not coincident.
(VGSI angle 3.0 / TCH 51)



CATEGORY	A	B	C	D
S-LOC 22L	560/40	512(600-3/4)	560-1 1/4	512(600-1 1/4)
S-LOC 22L (ALS INOP)	560/55	512(600-1)	560-1 3/8	512(600-1 3/8)
CIRCLING*	720-1 672(700-1)	1 140-1 1/2 1 092(1 100-1 1/2)	1 140-3 1 092(1 100-3)	1 380-3 1 332(1 400-3)

* Circling not authorized for west of RWY 22-04.

Change : Page control.

INTENTIONALLY

LEFT

BLANK

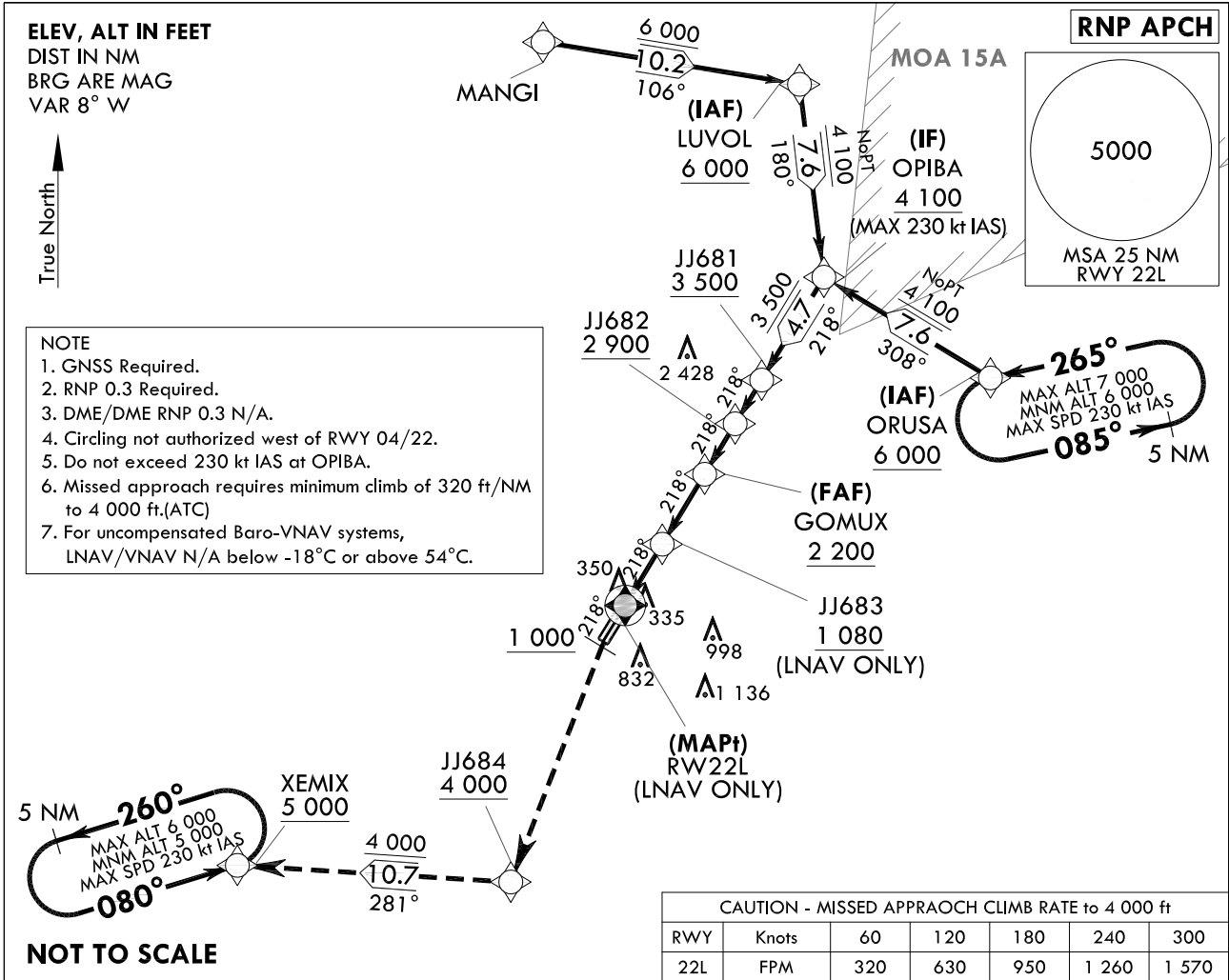
INSTRUMENT APPROACH CHART

AERODROME ELEV 48 ft
HEIGHTS RELATED TO
THR RWY 22L - ELEV 46 ft
HIGHEST ELEV TDZ 48 ft

GWANGJU APP	130.0
	228.9
GWANGJU TWR	118.05
	254.6

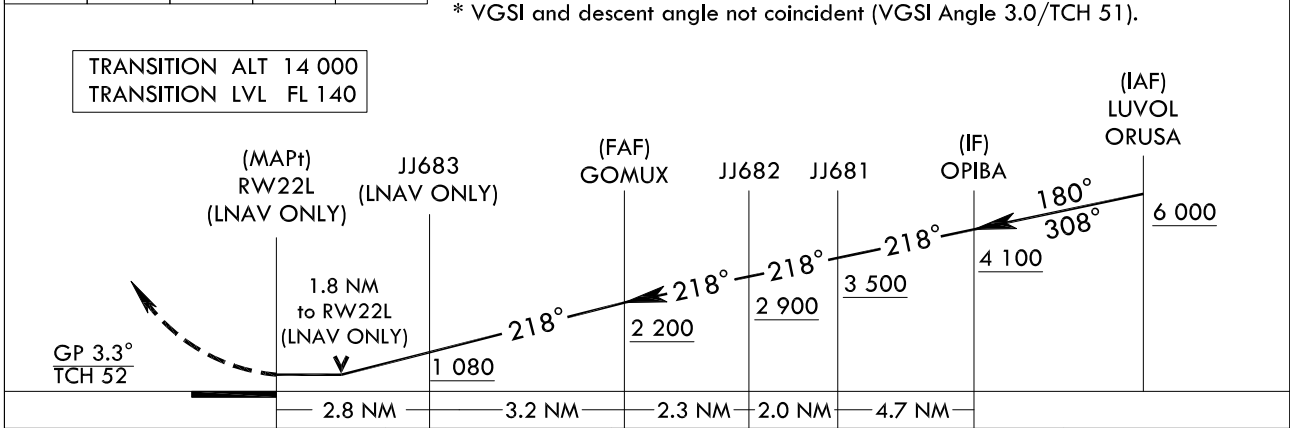
GWANGJU/Gwangju(RKJJ)
RNP RWY 22L

Note : Approach and circle to land under U.S. TERPS.



MISSED APPROACH
Climb HDG 218° to 1 000 ft, then climbing left turn direct to JJ684 at or above 4 000 ft, then track 281° to XEMIX at or above 5 000 ft and hold.

* VGSI and descent angle not coincident (VGSI Angle 3.0/TCH 51).



CATEGORY		A	B	C	D
LNAV/VNAV DA	ALS		568-1 3/8	520(600-1 3/8)	
	ALS INOP		568-1 5/8	520(600-1 5/8)	
LNAV MDA	ALS		660-1 1/2	612(700-1 1/2)	
	ALS INOP		660-1 3/4	612(700-1 3/4)	
CIRCLING		720-1 3/4 672(700-1 3/4)	1 140-1 3/4 1 092(1 100-1 3/4)	1 140-3 1 092(1 100-3)	1 380-3 1 332(1 400-3)

Change : Information of fix names(SERAN → LUVOL, BIENN → OPIBA, FRISA → ORUSA, GOEUL → GOMUX, XEROX → XEMIX).

AERONAUTICAL DATA TABULATION

Instrument Approach Procedure Coding Tables

Feeder Route - via MANGI to LUVOL(IAF)

Serial Number	Path Descriptor	Waypoint Identifier	Fly-over	Course/Track M(°T)	Distance (NM)	Turn direction	Altitude (ft)	Speed (kt)	Coordinates	VPA/ TCH	Navigation specification	Remarks
001	-	MANGI	-	-	-	-	-	-	35°30'11.3"N 126°44'31.7"E	-	RNAV 1	-
002	TF	LUVOL	-	106 (098.0)	10.2	-	+6 000	-	35°28'45.5"N 126°56'50.7"E	-	RNAV 1	IAF

RNP RWY 22L - via LUVOL to OPIBA(IF)

Serial Number	Path Descriptor	Waypoint Identifier	Fly-over	Course/Track M(°T)	Distance (NM)	Turn direction	Altitude (ft)	Speed (kt)	Coordinates	VPA/ TCH	Navigation specification	Remarks
001	IF	LUVOL	-	-	-	-	+6 000	-230	35°28'45.5"N 126°56'50.7"E	-	RNP APCH	IAF
002	TF	OPIBA	-	180 (171.6)	7.6	-	+4 100	-230	35°21'13.7"N 126°58'12.2"E	-	RNP APCH	IF NoPT

RNP RWY 22L - via ORUSA to OPIBA(IF)

Serial Number	Path Descriptor	Waypoint Identifier	Fly-over	Course/Track M(°T)	Distance (NM)	Turn direction	Altitude (ft)	Speed (kt)	Coordinates	VPA/ TCH	Navigation specification	Remarks
001	IF	ORUSA	-	-	-	-	+6 000	-230	35°17'25.0"N 127°06'14.5"E	-	RNP APCH	IAF
002	TF	OPIBA	-	308 (300.1)	7.6	-	+4 100	-230	35°21'13.7"N 126°58'12.2"E	-	RNP APCH	IF NoPT

RNP RWY 22L - via OPIBA(IF) to MAHF

Serial Number	Path Descriptor	Waypoint Identifier	Fly-over	Course/Track M(°T)	Distance (NM)	Turn direction	Altitude (ft)	Speed (kt)	Coordinates	VPA/ TCH	Navigation specification	Remarks
001	TF	OPIBA	-	-	-	-	+4 100	-230	35°21'13.7"N 126°58'12.2"E	-	RNP APCH	IF
002	TF	JJ681	-	218 (210.0)	4.7	-	+3 500	-	35°17'09.1"N 126°55'19.9"E	-	RNP APCH	-
003	TF	JJ682	-	218 (210.0)	2.0	-	+2 900	-	35°15'25.0"N 126°54'06.6"E	-	RNP APCH	-
004	TF	GOMUX	-	218 (210.0)	2.3	-	+2 200	-	35°13'25.3"N 126°52'42.5"E	-3.3/52	RNP APCH	FAF
005	TF	JJ683	-	218 (210.0)	3.2	-	+1 080	-	35°10'38.6"N 126°50'45.5"E	-	RNP APCH	LNAV ONLY
006	TF	RW22L	Y	218 (209.9)	2.8	-	-	-	35°08'12.8"N 126°49'03.3"E	-	RNP APCH	^{MAPt} LNAV ONLY
007	VA	1 000 ft	-	-	-	-	+1 000	-	-	-	RNP APCH	-
008	DF	JJ684	-	-	-	-	+4 000	-	34°57'17.9"N 126°43'53.3"E	-	RNP APCH	CG 320 ft/NM to 4 000 ft
009	TF	XEMIX	-	281 (272.2)	10.7	-	+5 000	-	34°57'41.4"N 126°30'53.8"E	-	RNP APCH	-

HOLDING PROCEDURE

Holding Identification	Path Descriptor	Waypoint Identifier	Fly-over	Course/Track M(°T)	Distance (NM)	Turn direction	Altitude (ft)	Speed (kt)	Coordinates	VPA/ TCH	Navigation specification	Remarks
RNP RWY 22L	HM	ORUSA	-	265 (256.6)	5.0	L	-7 000 +6 000	-230	35°17'25.0"N 127°06'14.5"E	-	RNAV 1	-
	HM	XEMIX	-	080 (071.6)	5.0	L	-6 000 +5 000	-230	34°57'41.4"N 126°30'53.8"E	-	RNAV 1	-

Change : Information of fix names(SERAN → LUVOL, BIENN → OPIBA, FRISA → ORUSA, GOEUL → GOMUX, XEROX → XEMIX).

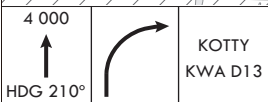
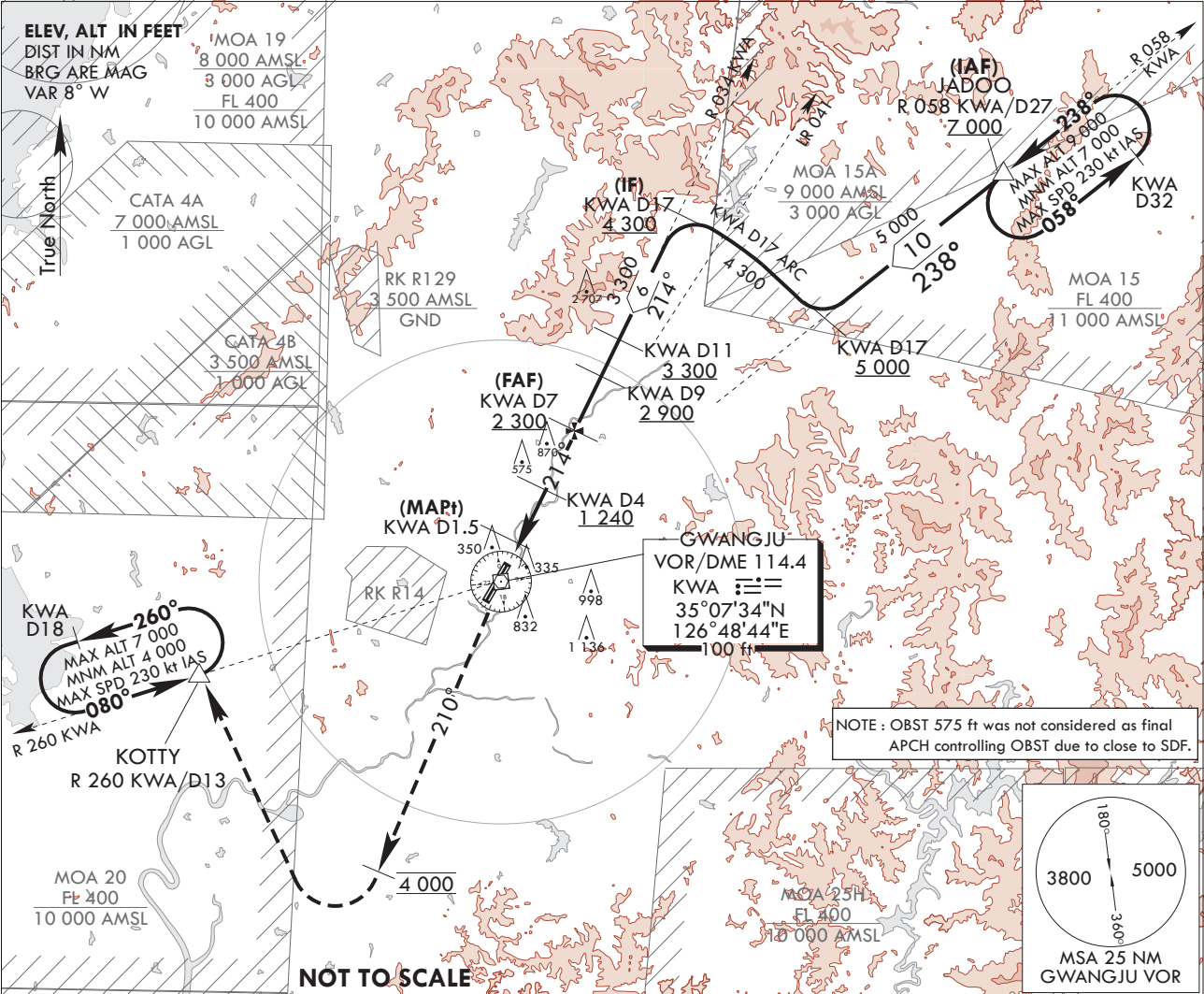
**INSTRUMENT
APPROACH
CHART**

AERODROME ELEV 48 ft
HEIGHTS RELATE TO
THR RWY 22L - ELEV 46 ft
HIGHEST ELEV TDZ 48 ft

GWANGJU APP	130.0
	228.9
GWANGJU TWR	118.05
	254.6

GWANGJU/Gwangju(RKJJ)
VOR/DME RWY 22L

Note : Approach and circle to land under U.S. TERPS.

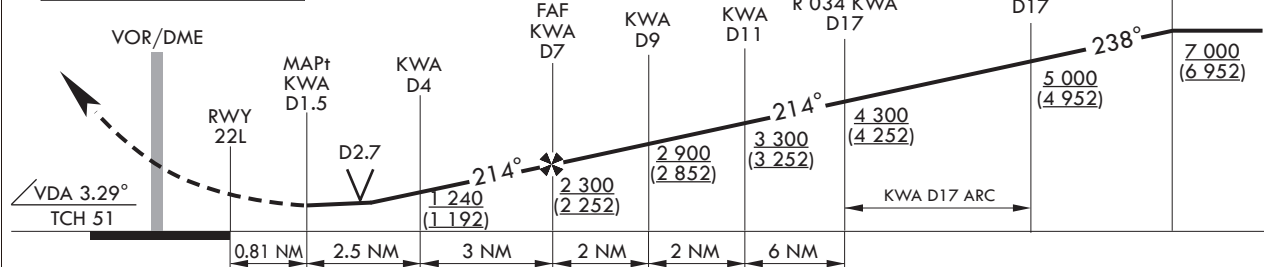


* VGSI and descent angle not coincident
(VGSI angle 3.0/TCH 51).

MISSED APPROACH

Climb to 4 000 ft on HDG 210°, then right turn direct to KOTTY and hold.

TRANSITION ALT 14 000
TRANSITION LVL FL 140



CATEGORY	A	B	C	D
S-VOR 22L	740/40 692(700-3/4)		740-1 3/4 692(700-1 3/4)	
S-VOR 22L (ALS INOP)	740/55 692(700-1)		740-2 692(700-2)	
<input checked="" type="checkbox"/> CIRCLING*	740-1 692(700-1)	1 140-1 1/2 1 092(1 100-1 1/2)	1 140-3 1 092(1 100-3)	1 380-3 1 332(1 400-3)

* Circling not authorized for west of RWY 22-04.

Change : Page control.

INTENTIONALLY

LEFT

BLANK

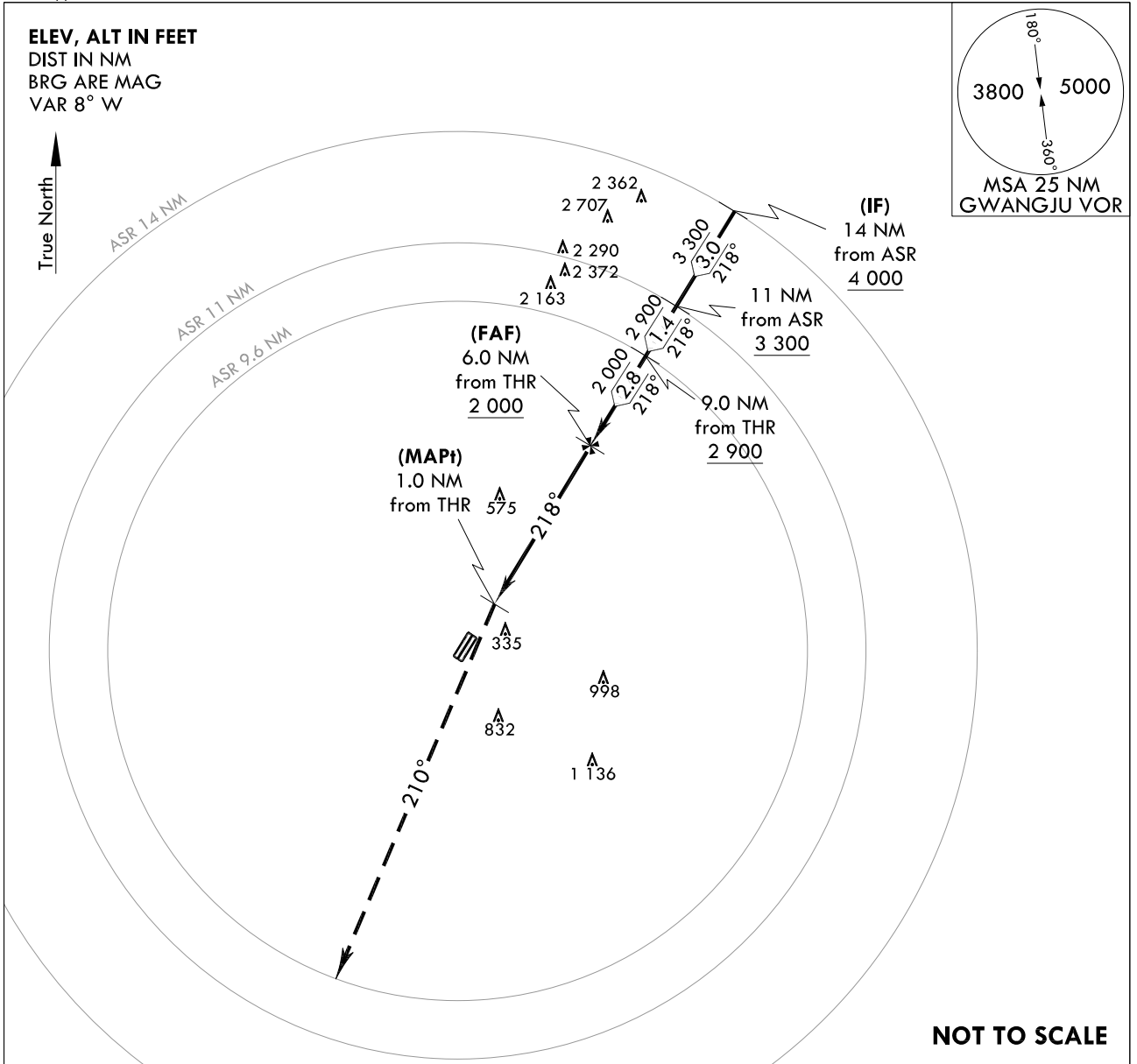
**INSTRUMENT
APPROACH
CHART**

AERODROME ELEV 48 ft
HEIGHTS RELATED TO
THR RWY 22L - ELEV 46 ft
HIGHEST ELEV TDZ 48 ft

GWANGJU APP 130.0
228.9
GWANGJU TWR 118.05
254.6

GWANGJU/Gwangju(RKJJ)
ASR RWY 22L

Note : Approach and circle to land under U.S. TERPS.



5 000 ↑ HDG 210°	MISSED APPROACH Climb HDG 210° to 5 000 ft, then expect radar vector.		TRANSITION ALT 14 000 TRANSITION LVL FL 140		
	<p>MAPt 1.0 NM from THR</p> <p>FAF 6.0 NM from THR</p> <p>9.0 NM from THR</p> <p>11 NM from ASR</p> <p>IF 14 NM from ASR</p> <p>4 000</p> <p>038°</p> <p>038°</p> <p>2 000</p> <p>2 900</p> <p>3 300</p> <p>1 060 1 380 1 700</p> <p>3 NM 4 NM 5 NM</p> <p>1.0 5.0 NM 2.8 NM 1.4 NM 3.0 NM</p> <p>∠VDA 2.99° TCH 51</p> <p>RWY 22L</p>				
CATEGORY	A	B	C	D	E
S-ASR 22L	860/55	812(900-1)	860-2	812(900-2)	
S-ASR 22L (ALS INOP)	860/60	812(900-1 1/4)	860-2 1/2	812(900-2 1/2)	
CIRCLING*	860-1 1/4 812(900-1 1/4)	1 140-1 1/2 1 092(1 100-1 1/2)	1 140-3 1 092(1 100-3)	1 380-3 1 332(1 400-3)	1 460-3 1 412(1 500-3)

* Circling not authorized for west of RWY 22-04.

Change : Page control.

INTENTIONALLY

LEFT

BLANK

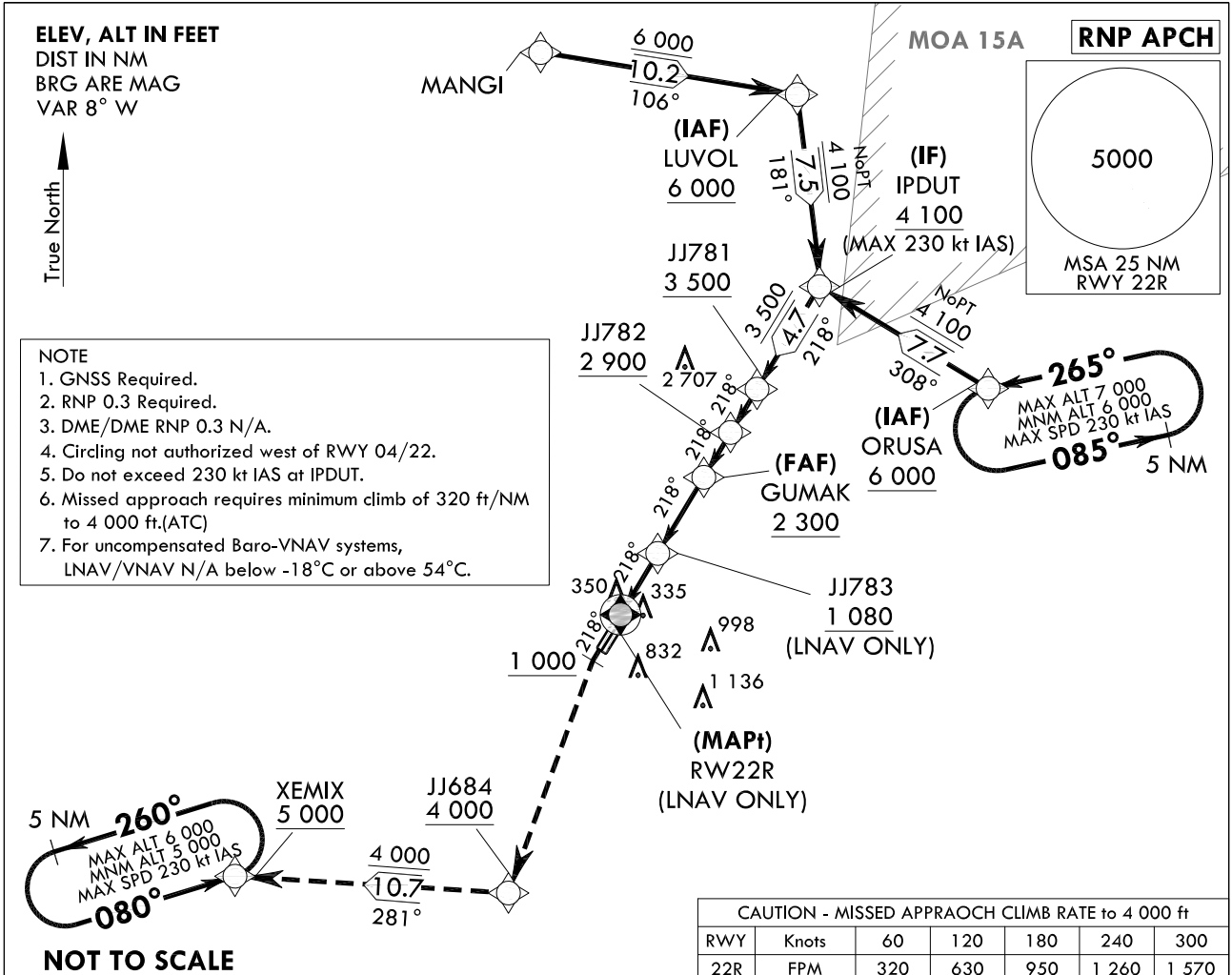
INSTRUMENT APPROACH CHART

AERODROME ELEV 48 ft
HEIGHTS RELATED TO
THR RWY 22R - ELEV 48 ft
HIGHEST ELEV TDZ 48 ft

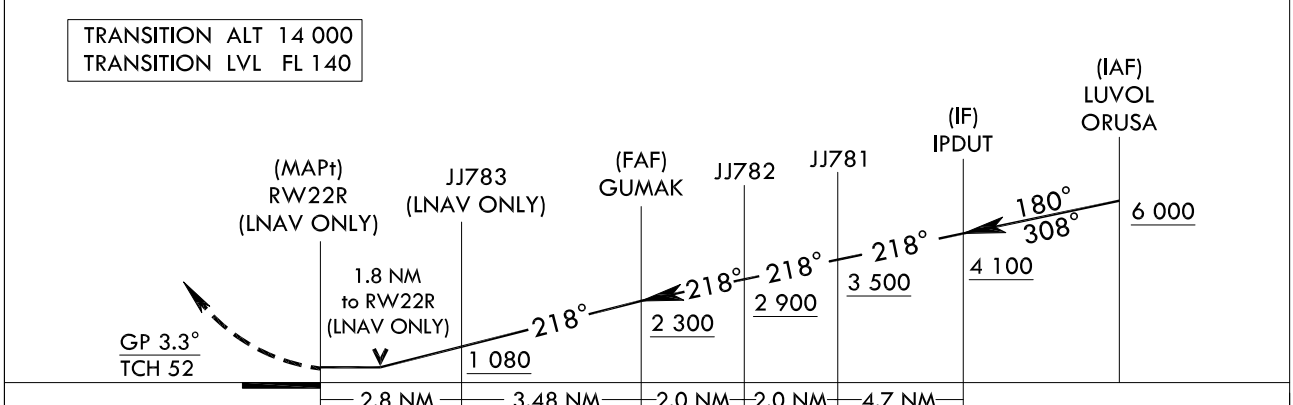
GWANGJU APP	130.0
	228.9
GWANGJU TWR	118.05
	254.6

GWANGJU/Gwangju(RKJJ)
RNP RWY 22R

Note : Approach and circle to land under U.S. TERPS.



MISSED APPROACH
Climb HDG 218° to 1 000 ft, then climbing left turn direct to JJ684 at or above 4 000 ft, then track 281° to XEMIX at or above 5 000 ft and hold.
* VGSI and descent angle not coincident (VGSI Angle 3.0/TCH 53).



CATEGORY		A	B	C	D
LNAV/VNAV DA	ALS		568-1 3/8	520(600-1 3/8)	
	ALS INOP		568-1 5/8	520(600-1 5/8)	
LNAV MDA	ALS		660-1 1/2	612(700-1 1/2)	
	ALS INOP		660-1 3/4	612(700-1 3/4)	
CIRCLING		720-1 3/4 672(700-1 3/4)	1 140-1 3/4 1 092(1 100-1 3/4)	1 140-3 1 092(1 100-3)	1 380-3 1 332(1 400-3)

Change : Information of fix names(SERAN → LUVOL, JEBEE → IPDUT, FRISA → ORUSA, KOMAK → GUMAK, XEROX → XEMIX).

AERONAUTICAL DATA TABULATION

Instrument Approach Procedure Coding Tables

Feeder Route - via MANGI to LUVOL(IAF)

Serial Number	Path Descriptor	Waypoint Identifier	Fly- over	Course/Track (M/°T)	Distance (NM)	Turn direction	Altitude (ft)	Speed (kt)	Coordinates	VPA/TCH	Navigation specification	Remarks
001	-	MANGI	-	-	-	-	-	-	35°30'11.3"N 126°44'31.7"E	-	RNAV 1	-
002	TF	LUVOL	-	106 (098.0)	10.2	-	+6 000	-	35°28'45.5"N 126°56'50.7"E	-	RNAV 1	IAF

RNP RWY 22R - via LUVOL to IPDUT(IF)

Serial Number	Path Descriptor	Waypoint Identifier	Fly- over	Course/Track (M/°T)	Distance (NM)	Turn direction	Altitude (ft)	Speed (kt)	Coordinates	VPA/TCH	Navigation specification	Remarks
001	IF	LUVOL	-	-	-	-	+6 000	-230	35°28'45.5"N 126°56'50.7"E	-	RNP APCH	IAF
002	TF	IPDUT	-	181 (172.2)	7.5	-	+4 100	-230	35°21'16.8"N 126°58'05.5"E	-	RNP APCH	IF NoPT

RNP RWY 22R - via ORUSA to IPDUT(IF)

Serial Number	Path Descriptor	Waypoint Identifier	Fly- over	Course/Track (M/°T)	Distance (NM)	Turn direction	Altitude (ft)	Speed (kt)	Coordinates	VPA/TCH	Navigation specification	Remarks
001	IF	ORUSA	-	-	-	-	+6 000	-230	35°17'25.0"N 127°06'14.5"E	-	RNP APCH	IAF
002	TF	IPDUT	-	308 (300.1)	7.7	-	+4 100	-230	35°21'16.8"N 126°58'05.5"E	-	RNP APCH	IF NoPT

RNP RWY 22R - via IPDUT(IF) to MAHF

Serial Number	Path Descriptor	Waypoint Identifier	Fly- over	Course/Track (M/°T)	Distance (NM)	Turn direction	Altitude (ft)	Speed (kt)	Coordinates	VPA/TCH	Navigation specification	Remarks
001	TF	IPDUT	-	-	-	-	+4 100	-230	35°21'16.8"N 126°58'05.5"E	-	RNP APCH	IF
002	TF	JJ781	-	218 (210.0)	4.7	-	+3 500	-	35°17'12.3"N 126°55'13.2"E	-	RNP APCH	-
003	TF	JJ782	-	218 (210.0)	2.0	-	+2 900	-	35°15'28.1"N 126°54'00.0"E	-	RNP APCH	-
004	TF	GUMAK	-	218 (210.0)	2.0	-	+2 300	-	35°13'42.9"N 126°52'46.0"E	-3.3/52	RNP APCH	FAF
005	TF	JJ783	-	218 (210.0)	3.5	-	+1 080	-	35°10'41.8"N 126°50'38.9"E	-	RNP APCH	LNAV ONLY
006	TF	RW22R	Y	218 (209.9)	2.8	-	-	-	35°08'15.9"N 126°48'56.6"E	-	RNP APCH	MAPT LNAV ONLY
007	VA	1 000 ft	-	-	-	-	+1 000	-	-	-	RNP APCH	-
008	DF	JJ684	-	-	-	-	+4 000	-	34°57'17.9"N 126°43'53.3"E	-	RNP APCH	CG 320 ft/NM to 4 000 ft
009	TF	XEMIX	-	281 (272.2)	10.7	-	+5 000	-	34°57'41.4"N 126°30'53.8"E	-	RNP APCH	-

HOLDING PROCEDURE

Holding Identification	Path Descriptor	Waypoint Identifier	Fly- over	Course/Track (M/°T)	Distance (NM)	Turn direction	Altitude (ft)	Speed (kt)	Coordinates	VPA/TCH	Navigation specification	Remarks
RNP RWY 22R	HM	ORUSA	-	265 (256.6)	5.0	L	-7 000 +6 000	-230	35°17'25.0"N 127°06'14.5"E	-	RNAV 1	-
	HM	XEMIX	-	080 (071.6)	5.0	L	-6 000 +5 000	-230	34°57'41.4"N 126°30'53.8"E	-	RNAV 1	-

Change : Information of fix names(SERAN → LUVOL, JEBEE → IPDUT, FRISA → ORUSA, KOMAK → GUMAK, XEROX → XEMIX).

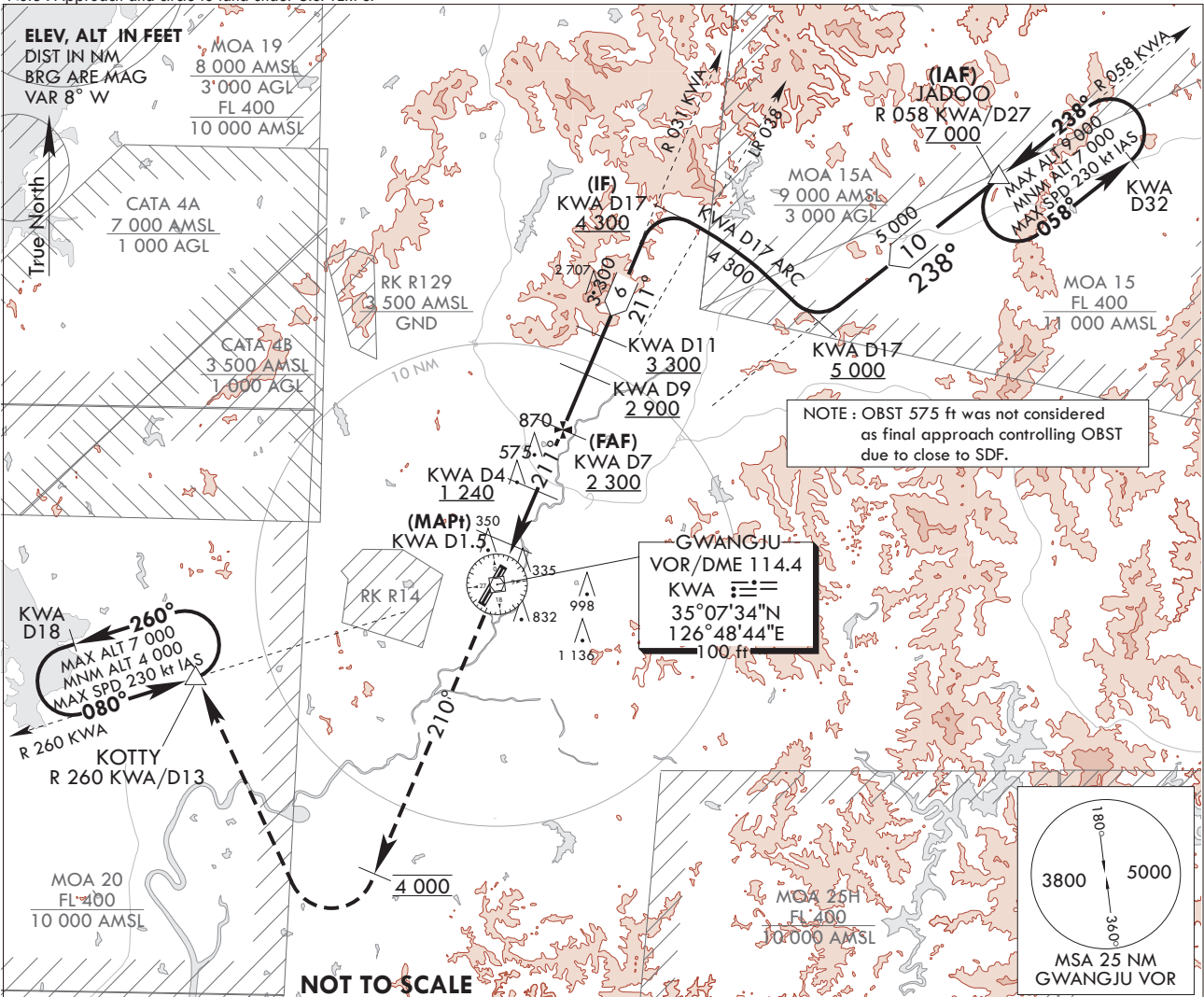
**INSTRUMENT
APPROACH
CHART**

AERODROME ELEV 48 ft
HEIGHTS RELATE TO
THR RWY 22R - ELEV 48 ft
HIGHEST ELEV TDZ 48 ft

GWANGJU APP	130.0
	228.9
GWANGJU TWR	118.05
	254.6

GWANGJU/Gwangju(RKJJ)
VOR/DME RWY 22R

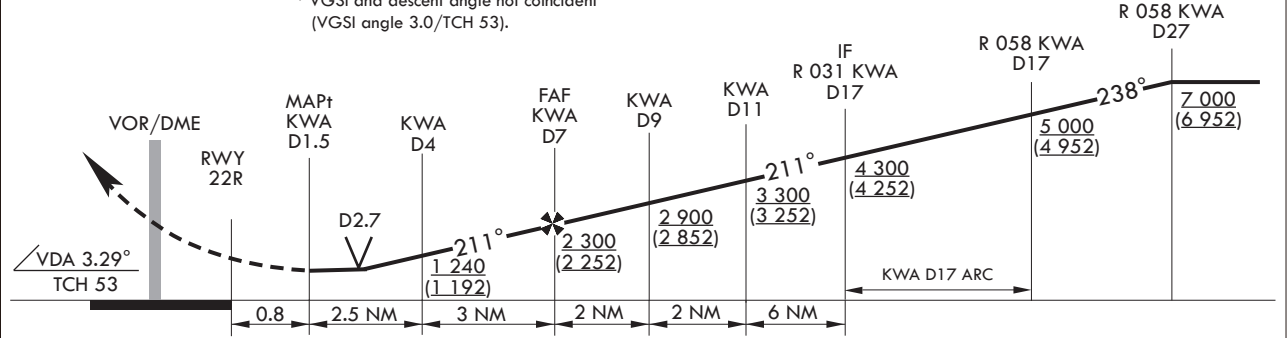
Note : Approach and circle to land under U.S. TERPS.



MISSED APPROACH
Climb to 4 000 ft on HDG 210°, then right turn direct to KOTTY and hold.
* VGSI and descent angle not coincident (VGSI angle 3.0/TCH 53).

TRANSITION ALT 14 000
TRANSITION LVL FL 140

IAF JADOO R 058 KWA D27



CATEGORY	A	B	C	D
S-VOR 22R	740/40 692(700-3/4)		740-1 3/4 692(700-1 3/4)	
S-VOR 22R (ALS INOP)	740/55 692(700-1)		740-2 692(700-2)	
<input checked="" type="checkbox"/> CIRCLING*	740-1 692(700-1)	1 140-1 1/2 1 092(1 100-1 1/2)	1 140-3 1 092(1 100-3)	1 380-3 1 332(1 400-3)

* Circling not authorized for west of RWY 22-04.

Change : Page control.

INTENTIONALLY

LEFT

BLANK

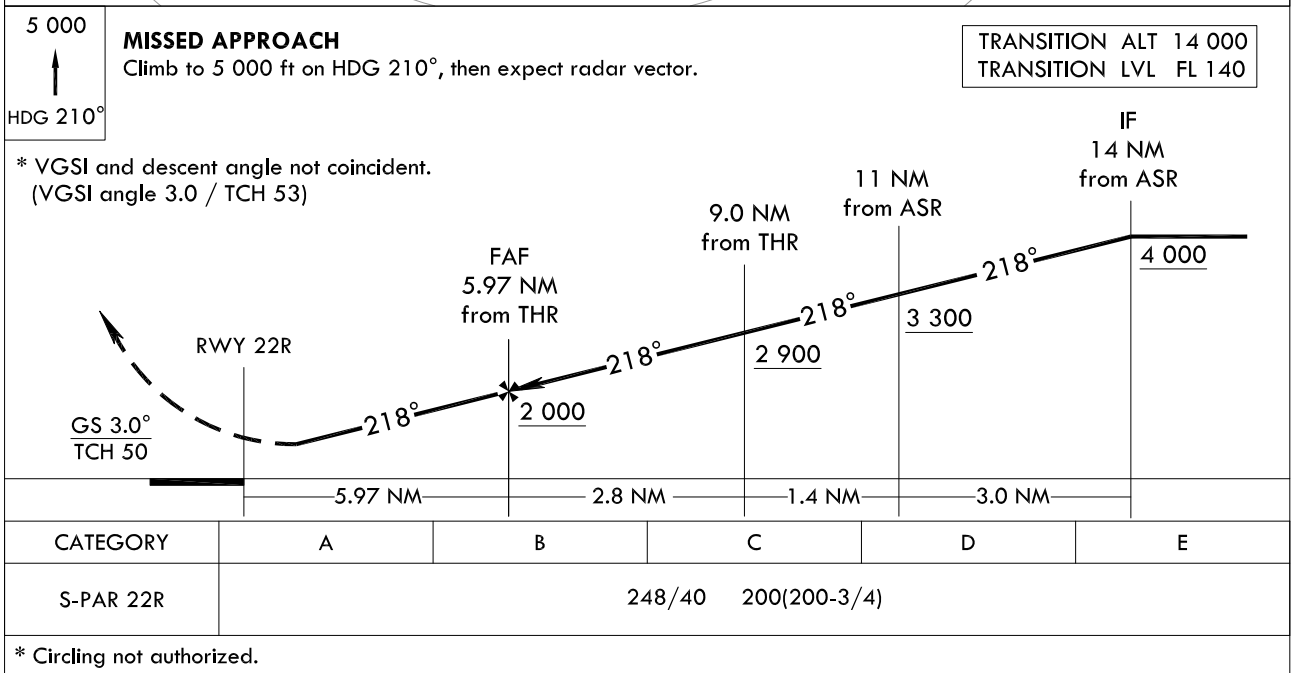
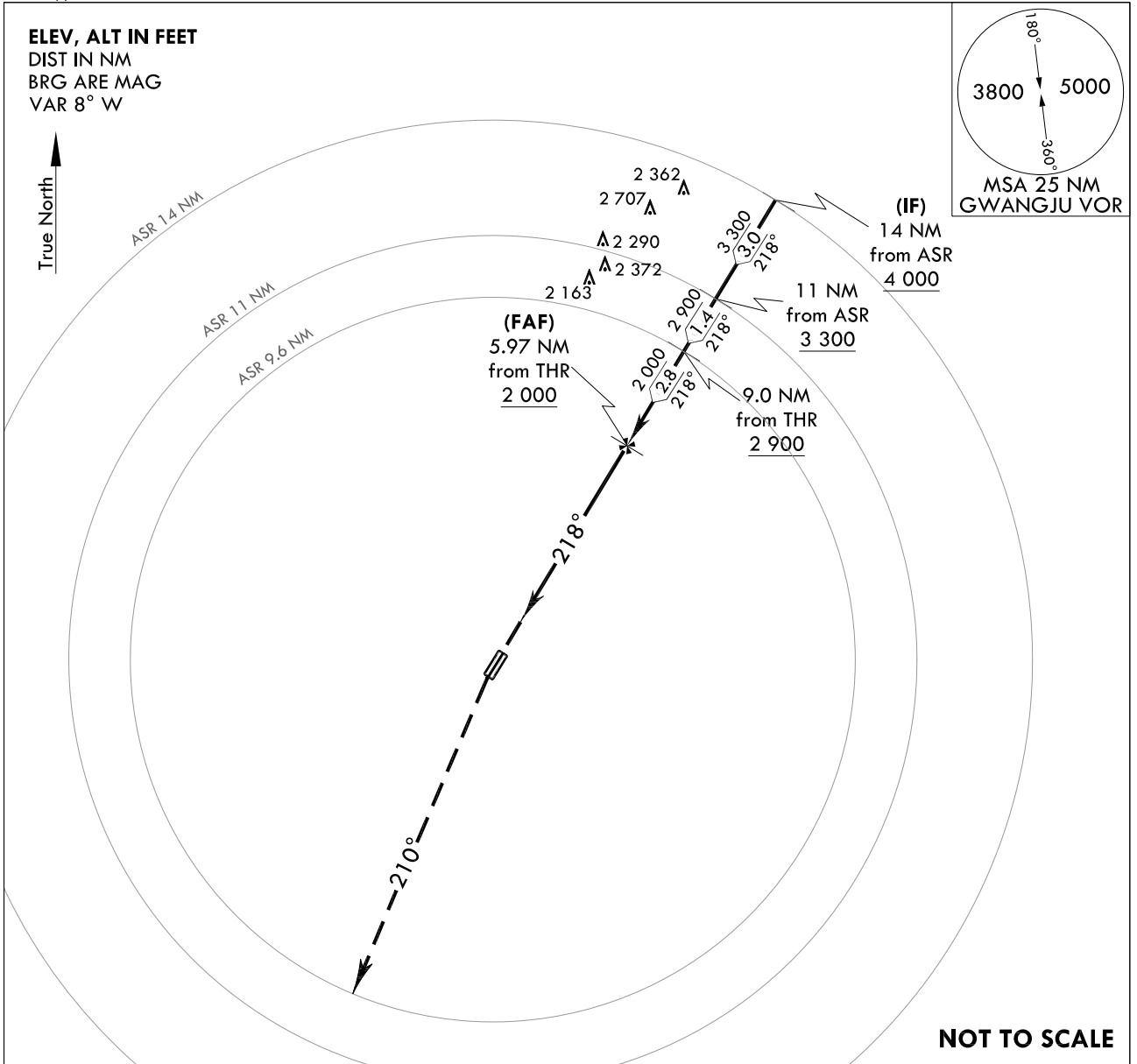
**INSTRUMENT
APPROACH
CHART**

AERODROME ELEV 48 ft
HEIGHTS RELATED TO
THR RWY 22R - ELEV 48 ft
HIGHEST ELEV TDZ 48 ft

GWANGJU APP 130.0
228.9
GWANGJU TWR 118.05
254.6

**GWANGJU/Gwangju(RKJJ)
PAR RWY 22R**

Note : Approach and circle to land under U.S. TERPS.



Change : Page control.

INTENTIONALLY

LEFT

BLANK

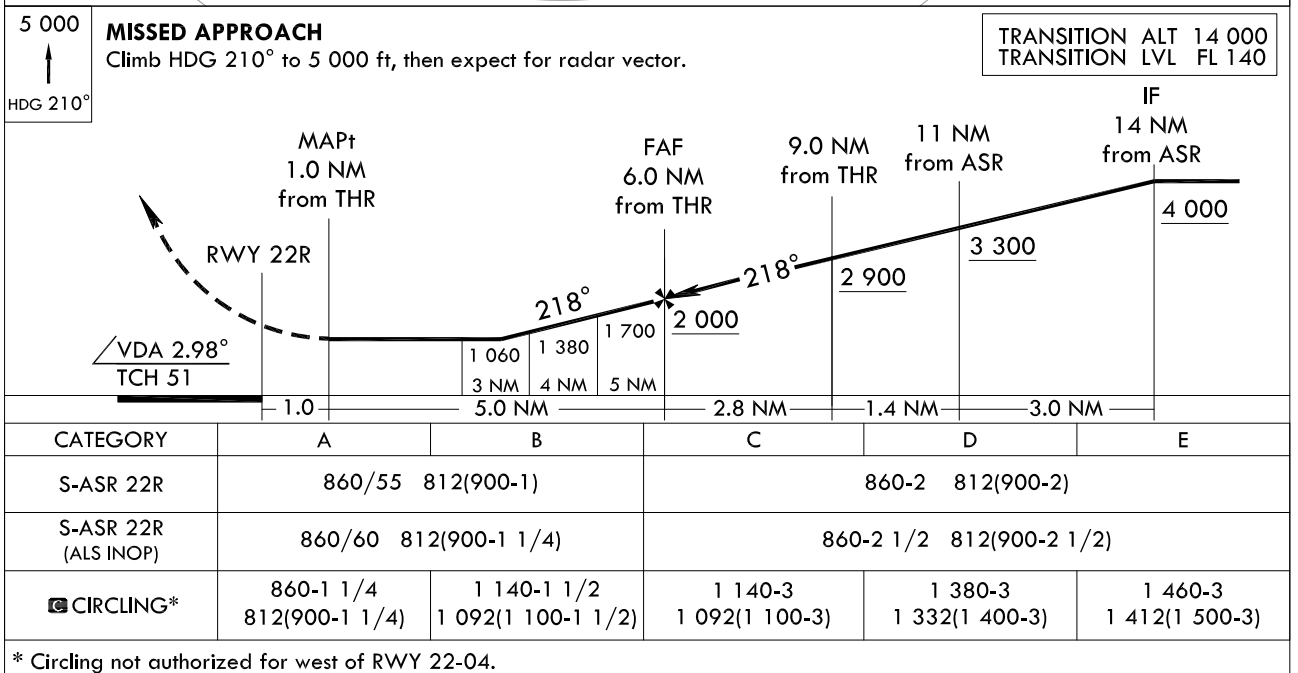
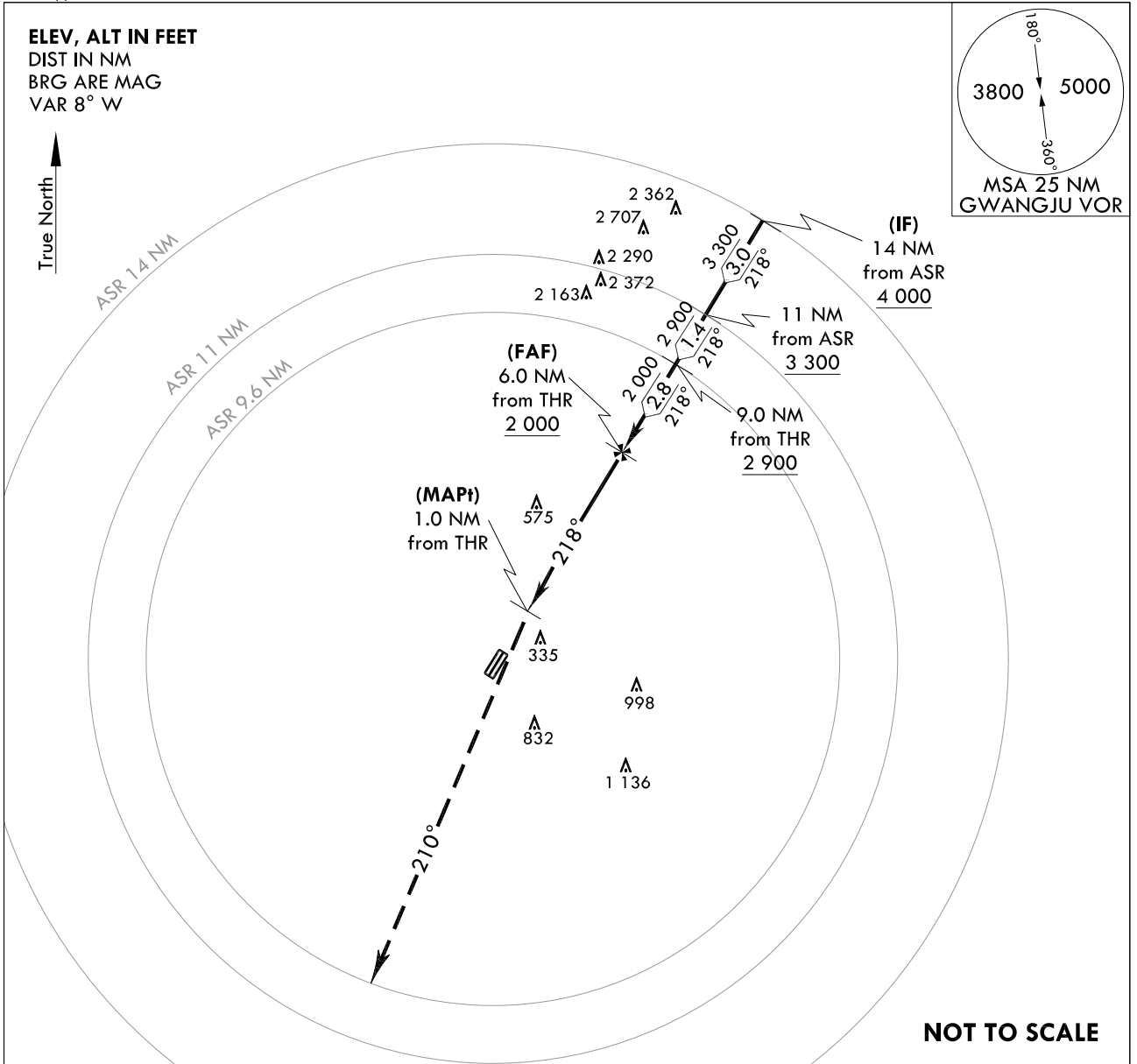
**INSTRUMENT
APPROACH
CHART**

AERODROME ELEV 48 ft
HEIGHTS RELATED TO
THR RWY 22R - ELEV 48 ft
HIGHEST ELEV TDZ 48 ft

GWANGJU APP 130.0
228.9
GWANGJU TWR 118.05
254.6

GWANGJU/Gwangju(RKJJ)
ASR RWY 22R

Note : Approach and circle to land under U.S. TERPS.



Change : Page control.

INTENTIONALLY

LEFT

BLANK